

## Product Datasheet

### ICAM1 Rabbit Polyclonal Antibody (orb101441)

<b>Catalog Number</b>	orb101441
<b>Category</b>	Antibodies
<b>Description</b>	ICAM1 Rabbit Polyclonal Antibody is an unconjugated antibody that specifically recognizes ICAM1. Generated against a KLH conjugated synthetic peptide derived from human ICAM1. The peptide is available as orb394009. It is supplied in liquid form and exhibits reactivity with Goat, Guinea pig, Human, Mouse and Rat samples. The suitable applications for this antibody are ICC, IF, IHC-P and WB.
<b>Target</b>	ICAM1
<b>Clonality</b>	Polyclonal
<b>Species/Host</b>	Rabbit
<b>Isotype</b>	IgG
<b>Conjugation</b>	Unconjugated
<b>Reactivity</b>	Goat, Guinea pig, Human, Mouse, Rat
<b>Predicted Reactivity</b>	Bovine, Porcine
<b>Form/Appearance</b>	10 mM PBS, 0.02% sodium azide
<b>Concentration</b>	- 100 µg (in 200 µl): 0.5 mg/ml- 200 µg (in 400 µl): 0.5 mg/ml
<b>Purity</b>	Polyclonal antibodies are purified by peptide affinity chromatography
<b>Immunogen</b>	KLH conjugated synthetic peptide derived from human ICAM1. Please contact us for the exact immunogen sequence. The peptide is available as orb394009.
<b>UniProt ID</b>	<b>P05362, Q00238</b>

**Biorbyt Ltd.**

7 Signet Court, Swann Road  
Cambridge  
CB5 8LA  
United Kingdom

Email: [info@biorbyt.com](mailto:info@biorbyt.com), [support@biorbyt.com](mailto:support@biorbyt.com)

Phone: [+44 \(0\)1223 859353](tel:+44(0)1223859353) | Fax: [+1 \(415\) 651-8558](tel:+1(415)651-8558)

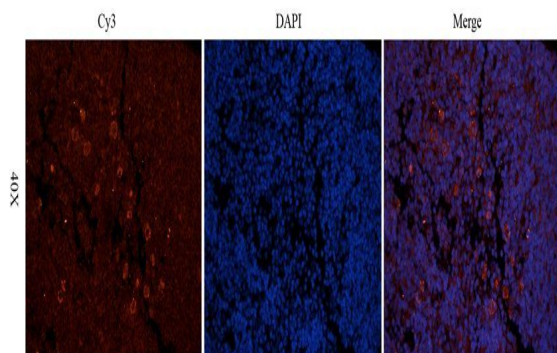
**Biorbyt LLC**

68 TW Alexander Drive  
Research Triangle Park  
Durham  
NC 27713-2847  
United States

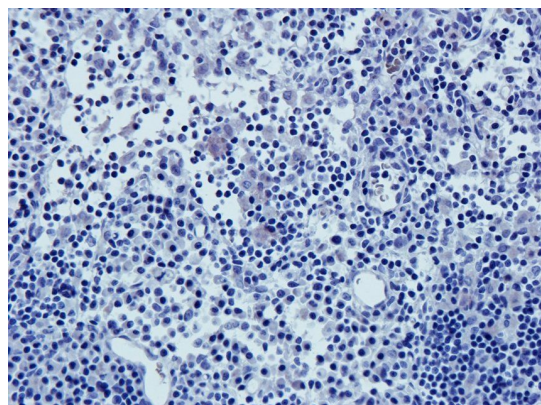
Email: [info@biorbyt.com](mailto:info@biorbyt.com), [support@biorbyt.com](mailto:support@biorbyt.com)

Phone: [+1 \(415\) 906-5211](tel:+1(415)906-5211) | Fax: [+1 \(415\) 651-8558](tel:+1(415)651-8558)

<b>MW</b>	58 kDa
<b>Tested applications</b>	ICC, IF, IHC-P, WB
<b>Dilution range</b>	IHC-P: 1:50-300, IF/ICC: 1:50-300, WB: 1:200-2000
<b>Storage</b>	Maintain refrigerated at 2-8°C for up to 2 weeks. For long term storage store at -20°C in small aliquots to prevent freeze-thaw cycles.
<b>Note</b>	For research use only
<b>Entrez</b>	<b>3383</b>
<b>Expiration Date</b>	12 months from date of receipt.



IF analysis of rat lymph node tissue using anti-ICAM1 (2.5 ug/ml)



IHC-P image of rat lymph node tissue using anti-ICAM1 (2.5 ug/ml)

**Biorbyt Ltd.**

7 Signet Court, Swann Road  
Cambridge  
CB5 8LA  
United Kingdom

Email: [info@biorbyt.com](mailto:info@biorbyt.com), [support@biorbyt.com](mailto:support@biorbyt.com)

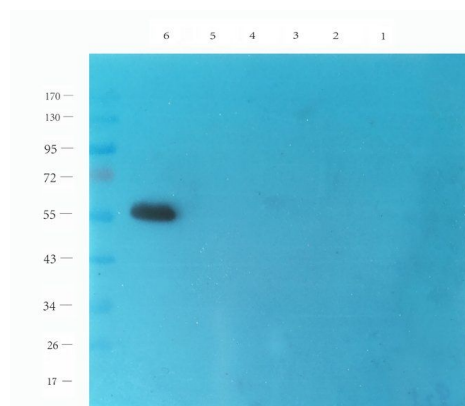
Phone: [+44 \(0\)1223 859353](tel:+44(0)1223859353) | Fax: [+1 \(415\) 651-8558](tel:+1(415)651-8558)

**Biorbyt LLC**

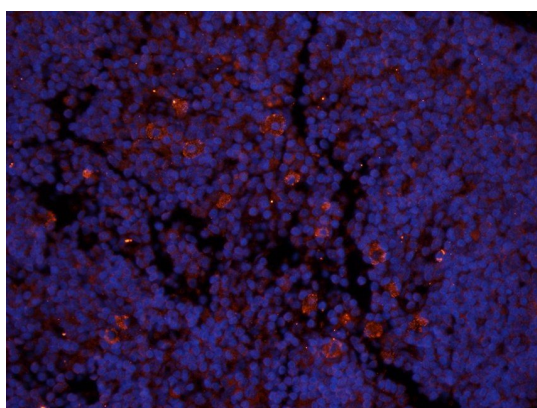
68 TW Alexander Drive  
Research Triangle Park  
Durham  
NC 27713-2847  
United States

Email: [info@biorbyt.com](mailto:info@biorbyt.com), [support@biorbyt.com](mailto:support@biorbyt.com)

Phone: [+1 \(415\) 906-5211](tel:+1(415)906-5211) | Fax: [+1 \(415\) 651-8558](tel:+1(415)651-8558)



Western blot analysis of mouse spleen (lane 1), rat lymph node (lane 2), rat lung(lane 3), mouse brain (lane 4), mouse spinal cord (lane 5), human breast cancer (lane 6) using anti-ICAM1 (1 ug/ml)



Immunofluorescence image of rat lymph node tissue using anti-ICAM1 (2.5 ug/ml)

**Biorbyt Ltd.**

7 Signet Court, Swann Road  
Cambridge  
CB5 8LA  
United Kingdom

Email: [info@biorbyt.com](mailto:info@biorbyt.com), [support@biorbyt.com](mailto:support@biorbyt.com)

Phone: [+44 \(0\)1223 859353](tel:+44(0)1223859353) | Fax: [+1 \(415\) 651-8558](tel:+1(415)651-8558)

**Biorbyt LLC**

68 TW Alexander Drive  
Research Triangle Park  
Durham  
NC 27713-2847  
United States

Email: [info@biorbyt.com](mailto:info@biorbyt.com), [support@biorbyt.com](mailto:support@biorbyt.com)

Phone: [+1 \(415\) 906-5211](tel:+1(415)906-5211) | Fax: [+1 \(415\) 651-8558](tel:+1(415)651-8558)