

Product Datasheet

Sclerostin Rabbit Polyclonal Antibody (orb100911)

Catalog Number	orb100911
Category	Antibodies
Description	Sclerostin Rabbit Polyclonal Antibody
Target	Sclerostin
Clonality	Polyclonal
Species/Host	Rabbit
Isotype	IgG
Conjugation	Unconjugated
Form/Appearance	10 mM PBS, 0.02% sodium azide
Concentration	- 100 µg (in 200 µl): 0.5 mg/ml- 200 µg (in 400 µl): 0.5 mg/ml
Purity	Polyclonal antibodies are purified by peptide affinity chromatography
Immunogen	KLH conjugated synthetic peptide derived from human Sclerostin. Please contact us for the exact immunogen sequence. The peptide is available as orb374806.
UniProt ID	Q99P68, Q99P67, Q9BQB4
MW	24 kDa
Tested applications	ELISA, IHC-P, WB
Dilution range	IHC-P: 1:100-300, WB: 1:200-1000
Storage	Maintain refrigerated at 2-8°C for up to 2 weeks. For long term storage store at -20°C in small aliquots to prevent freeze-thaw cycles.

Biorbyt Ltd.

7 Signet Court, Swann Road
Cambridge
CB5 8LA
United Kingdom

Email: info@biorbyt.com, support@biorbyt.com

Phone: [+44 \(0\)1223 859353](tel:+44(0)1223859353) | Fax: [+1 \(415\) 651-8558](tel:+1(415)651-8558)

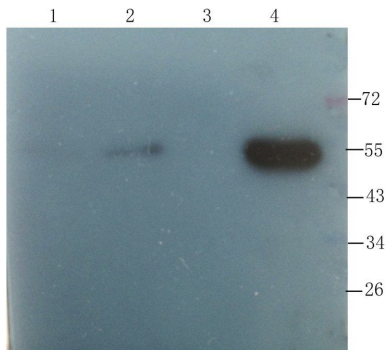
Biorbyt LLC

68 TW Alexander Drive
Research Triangle Park
Durham
NC 27713
United States

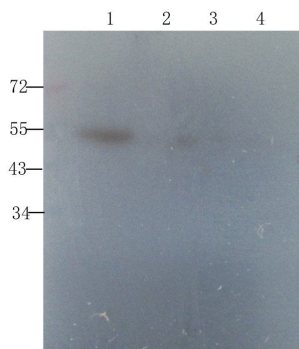
Email: info@biorbyt.com, support@biorbyt.com

Phone: [+1 \(415\) 906-5211](tel:+1(415)906-5211) | Fax: [+1 \(415\) 651-8558](tel:+1(415)651-8558)

Note	For research use only
Entrez	50964
NCBI	11, 21, 025237, 079513
Expiration Date	12 months from date of receipt.



WB analysis of human thyroid cancer (lane 1), human endometrial cancer (lane 2), human mammary fibroma (lane 3), human breast cancer (lane 4) using Sclerostin antibody (1 ug/ml)



WB analysis of human thyroid cancer (lane 1), human endometrial cancer (lane 2), human mammary fibroma (lane 3), human breast cancer (lane 4) using Sclerostin antibody (1 ug/ml)

Biorbyt Ltd.

7 Signet Court, Swann Road
Cambridge
CB5 8LA
United Kingdom

Email: info@biorbyt.com, support@biorbyt.com

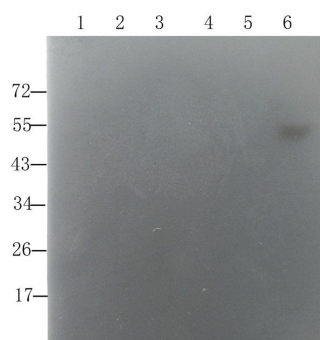
Phone: [+44 \(0\)1223 859353](tel:+44(0)1223859353) | Fax: [+1 \(415\) 651-8558](tel:+1(415)651-8558)

Biorbyt LLC

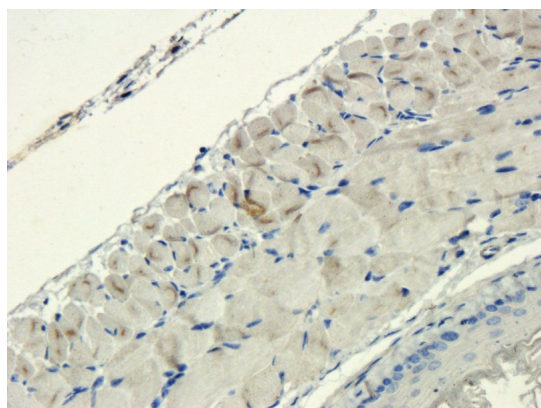
68 TW Alexander Drive
Research Triangle Park
Durham
NC 27713
United States

Email: info@biorbyt.com, support@biorbyt.com

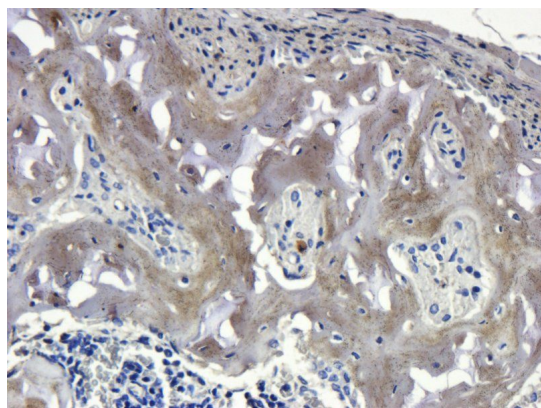
Phone: [+1 \(415\) 906-5211](tel:+1(415)906-5211) | Fax: [+1 \(415\) 651-8558](tel:+1(415)651-8558)



Western blot analysis of rat kidney (lane 1), mouse liver (lane 2), mouse lung (lane 3), mouse spinal cord (lane 4), hela cells (lane 5), human breast cancer (lane 6) using Sclerostin antibody (1 ug/ml)



Immunohistochemical staining of mouse lung tissue using anti-Sclerostin (2.5 ug/ml)



IHC-P staining of mouse bone marrow tissue using Sclerostin antibody (2.5 ug/ml)

Biorbyt Ltd.

7 Signet Court, Swann Road
Cambridge
CB5 8LA
United Kingdom

Email: info@biorbyt.com, support@biorbyt.com

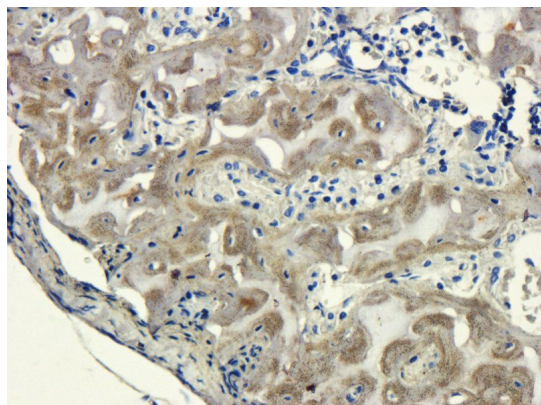
Phone: +44 (0)1223 859353 | Fax: +1 (415) 651-8558

Biorbyt LLC

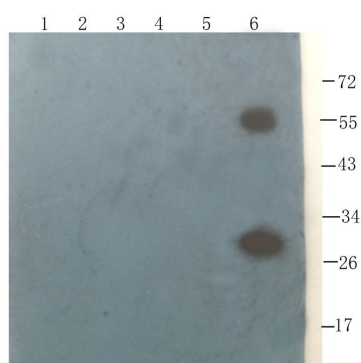
68 TW Alexander Drive
Research Triangle Park
Durham
NC 27713
United States

Email: info@biorbyt.com, support@biorbyt.com

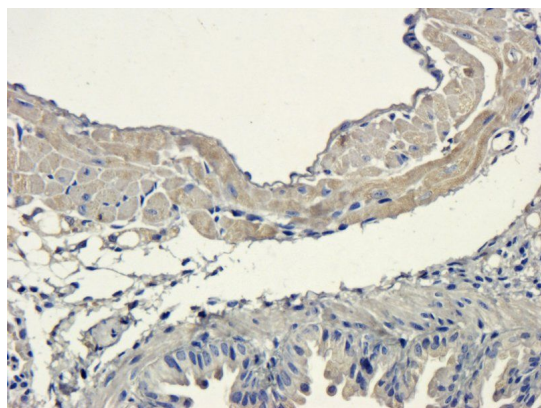
Phone: +1 (415) 906-5211 | Fax: +1 (415) 651-8558



Immunohistochemical staining of paraffin embedded mouse bone marrow tissue using anti-Sclerostin (2.5 ug/ml)



Western blot analysis of rat kidney (lane 1), mouse liver (lane 2), mouse lung (lane 3), mouse spinal cord (lane 4), hela cells (lane 5), human breast cancer (lane 6) using Sclerostin antibody (1 ug/ml)



IHC-P image of mouse lung tissue using anti-Sclerostin (2.5 ug/ml)

Biorbyt Ltd.

7 Signet Court, Swann Road
Cambridge
CB5 8LA
United Kingdom

Email: info@biorbyt.com, support@biorbyt.com

Phone: +44 (0)1223 859353 | Fax: +1 (415) 651-8558

Biorbyt LLC

68 TW Alexander Drive
Research Triangle Park
Durham
NC 27713
United States

Email: info@biorbyt.com, support@biorbyt.com

Phone: +1 (415) 906-5211 | Fax: +1 (415) 651-8558