

Product Datasheet

beta 1 Adrenergic Receptor Rabbit Polyclonal Antibody (orb10055)

Catalog Number	orb10055
Category	Antibodies
Description	beta 1 Adrenergic Receptor Rabbit Polyclonal Antibody
Target	beta 1 Adrenergic Receptor
Clonality	Polyclonal
Species/Host	Rabbit
Isotype	IgG
Conjugation	Unconjugated
Reactivity	Human, Mouse, Rat
Form/Appearance	10 mM PBS, 0.02% sodium azide
Concentration	- 100 µg (in 200 µl): 0.5 mg/ml- 200 µg (in 400 µl): 0.5 mg/ml
Purity	Polyclonal antibodies are purified by peptide affinity chromatography
Immunogen	KLH conjugated synthetic peptide derived from human beta 1 Adrenergic Receptor. Please contact us for the exact immunogen sequence. The peptide is available as orb374700.
UniProt ID	P34971, P08588, P18090
RRID	AB_10762499
MW	50 kDa

Biorbyt Ltd.

7 Signet Court, Swann Road
Cambridge
CB5 8LA
United Kingdom

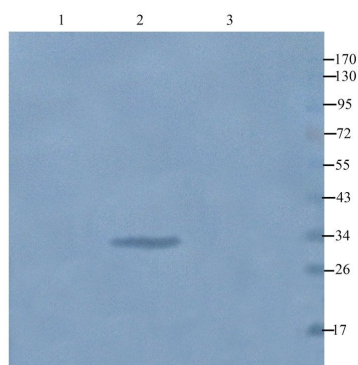
Email: info@biorbyt.com, support@biorbyt.com
Phone: [+44 \(0\)1223 859353](tel:+44(0)1223859353) | Fax: [+1 \(415\) 651-8558](tel:+1(415)651-8558)

Biorbyt LLC

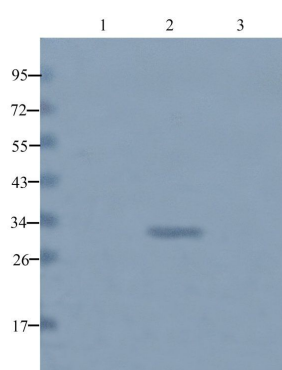
68 TW Alexander Drive
Research Triangle Park
Durham
NC 27713
United States

Email: info@biorbyt.com, support@biorbyt.com
Phone: [+1 \(415\) 906-5211](tel:+1(415)906-5211) | Fax: [+1 \(415\) 651-8558](tel:+1(415)651-8558)

Tested applications	IHC-P, WB
Dilution range	IHC-P: 1:100-300 (based on 0.5 mg/ml), WB: 1:100-500
Storage	Maintain refrigerated at 2-8°C for up to 2 weeks. For long term storage store at -20°C in small aliquots to prevent freeze-thaw cycles.
Note	For research use only
Entrez	153
NCBI	000684, 11, 21, 000675
Expiration Date	12 months from date of receipt.



WB analysis of rat kidney (lane 1), rat brain (lane 2), rat muscle (lane 3) using beta 1 Adrenergic Receptor antibody (1 ug/ml)



Western blot analysis of rat liver (lane 1), mouse heart (lane 2), Hela cells (lane 3) using beta 1 Adrenergic Receptor antibody (1 ug/ml)

Biorbyt Ltd.

7 Signet Court, Swann Road
Cambridge
CB5 8LA
United Kingdom

Email: info@biorbyt.com, support@biorbyt.com

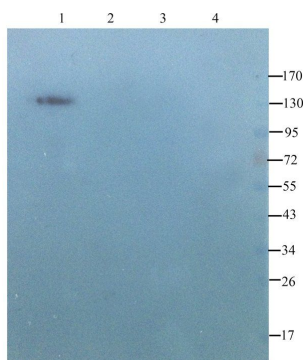
Phone: +44 (0)1223 859353 | Fax: +1 (415) 651-8558

Biorbyt LLC

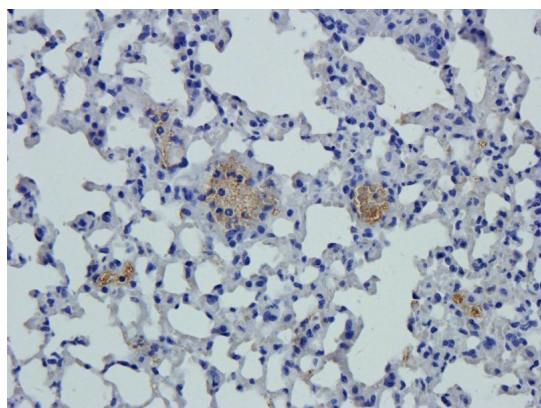
68 TW Alexander Drive
Research Triangle Park
Durham
NC 27713
United States

Email: info@biorbyt.com, support@biorbyt.com

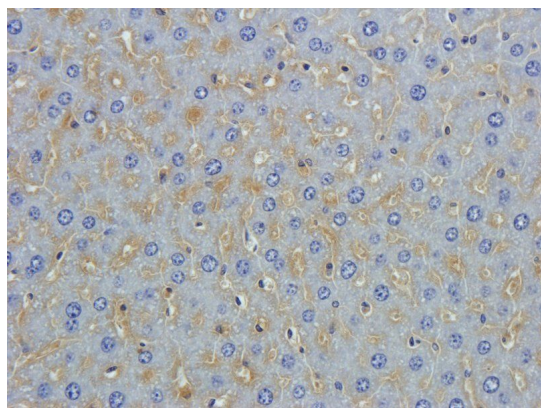
Phone: +1 (415) 906-5211 | Fax: +1 (415) 651-8558



WB analysis of rat kidney (lane 1), rat brain (lane 2), rat muscle (lane 3), rat lung (lane 4) using beta 4 Adrenergic Receptor antibody (1 ug/ml)



Immunohistochemical staining of mouse lung tissue using anti-beta 1 Adrenergic Receptor (dilution of primary antibody - 2.5 ug/ml)



IHC-P image of mouse liver tissue using beta 1 Adrenergic Receptor antibody (dilution of primary antibody at 2.5 ug/ml)

Biorbyt Ltd.

7 Signet Court, Swann Road
Cambridge
CB5 8LA
United Kingdom

Email: info@biorbyt.com, support@biorbyt.com

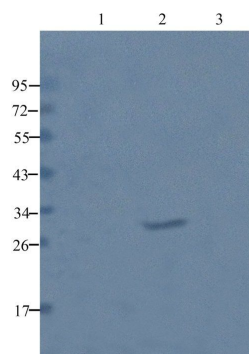
Phone: +44 (0)1223 859353 | Fax: +1 (415) 651-8558

Biorbyt LLC

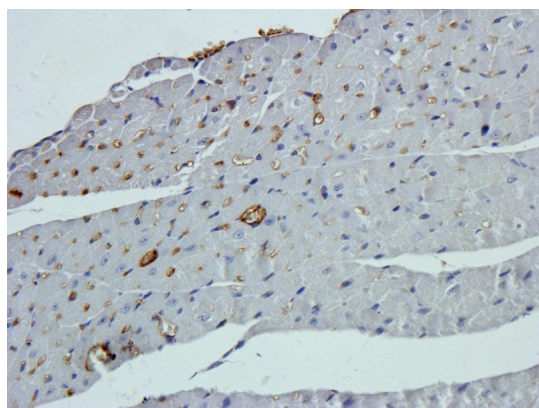
68 TW Alexander Drive
Research Triangle Park
Durham
NC 27713
United States

Email: info@biorbyt.com, support@biorbyt.com

Phone: +1 (415) 906-5211 | Fax: +1 (415) 651-8558



WB analysis of rat liver (lane 1), mouse heart (lane 2), Hela cells (lane 3) using beta 4 Adrenergic Receptor antibody (1 ug/ml)



Immunohistochemical staining of paraffin embedded mouse heart tissue using beta 1 Adrenergic Receptor antibody (primary antibody at 2.5 ug/ml)

Biorbyt Ltd.

7 Signet Court, Swann Road
Cambridge
CB5 8LA
United Kingdom

Email: info@biorbyt.com, support@biorbyt.com

Phone: [+44 \(0\)1223 859353](tel:+44(0)1223859353) | Fax: [+1 \(415\) 651-8558](tel:+1(415)651-8558)

Biorbyt LLC

68 TW Alexander Drive
Research Triangle Park
Durham
NC 27713
United States

Email: info@biorbyt.com, support@biorbyt.com

Phone: [+1 \(415\) 906-5211](tel:+1(415)906-5211) | Fax: [+1 \(415\) 651-8558](tel:+1(415)651-8558)