

Product Datasheet

Estrogen Receptor beta 2 Rabbit Polyclonal Antibody (orb100531)

| | |
|----------------------------|---|
| Catalog Number | orb100531 |
| Category | Antibodies |
| Description | Estrogen Receptor beta 2 Rabbit Polyclonal Antibody |
| Target | Estrogen Receptor beta 2 |
| Clonality | Polyclonal |
| Species/Host | Rabbit |
| Isotype | IgG |
| Conjugation | Unconjugated |
| Reactivity | Human, Mouse, Rat |
| Form/Appearance | 10 mM PBS, 0.02% sodium azide |
| Concentration | - 100 µg (in 200 µl): 0.5 mg/ml- 200 µg (in 400 µl): 0.5 mg/ml |
| Purity | Polyclonal antibodies are purified by peptide affinity chromatography |
| Immunogen | KLH conjugated synthetic peptide derived from human Estrogen Receptor beta 2. Please contact us for the exact immunogen sequence. The peptide is available as orb12934. |
| UniProt ID | P11475, Q61539, O95718 |
| MW | 59 kDa |
| Tested applications | ICC, IF, IHC-P, WB |

Biorbyt Ltd.

7 Signet Court, Swann Road
Cambridge
CB5 8LA
United Kingdom

Email: info@biorbyt.com, support@biorbyt.com

Phone: [+44 \(0\)1223 859353](tel:+44(0)1223859353) | Fax: [+1 \(415\) 651-8558](tel:+1(415)651-8558)

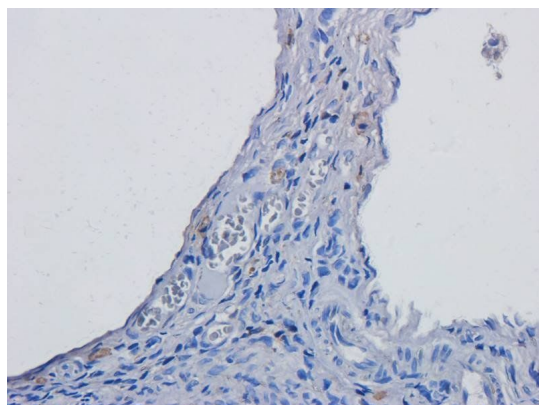
Biorbyt LLC

68 TW Alexander Drive
Research Triangle Park
Durham
NC 27713
United States

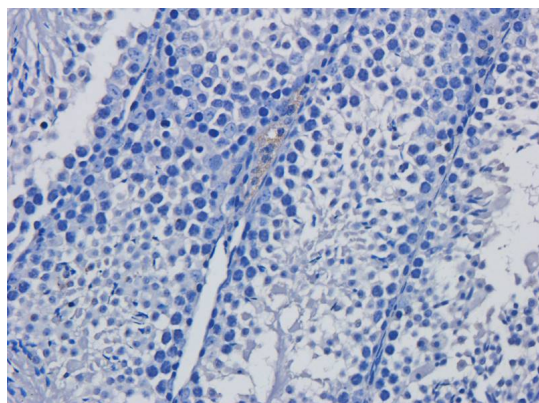
Email: info@biorbyt.com, support@biorbyt.com

Phone: [+1 \(415\) 906-5211](tel:+1(415)906-5211) | Fax: [+1 \(415\) 651-8558](tel:+1(415)651-8558)

| | |
|------------------------|---|
| Dilution range | IF/ICC: 1:50-400, IHC-P: 1:50-400, WB: 1:200-1500 |
| Storage | Maintain refrigerated at 2-8°C for up to 2 weeks. For long term storage store at -20°C in small aliquots to prevent freeze-thaw cycles. |
| Note | For research use only |
| Entrez | 2103 |
| NCBI | 004443, 004452 |
| Expiration Date | 12 months from date of receipt. |



IHC-P image of rat ovary tissue using Estrogen Receptor beta 2 antibody (dilution of primary antibody at 2.5 ug/ml)



IHC-P image of mouse testis tissue using anti-Estrogen Receptor beta 2 (dilution of primary antibody at 2.5 ug/ml)

Biorbyt Ltd.

7 Signet Court, Swann Road
Cambridge
CB5 8LA
United Kingdom

Email: info@biorbyt.com, support@biorbyt.com

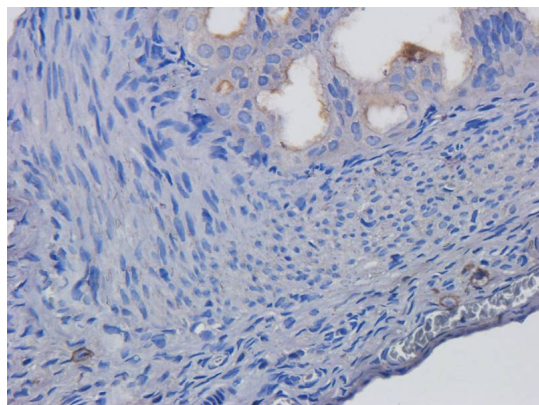
Phone: [+44 \(0\)1223 859353](tel:+44(0)1223859353) | Fax: [+1 \(415\) 651-8558](tel:+1(415)651-8558)

Biorbyt LLC

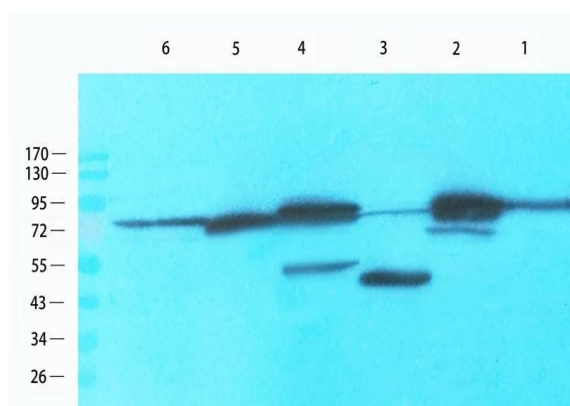
68 TW Alexander Drive
Research Triangle Park
Durham
NC 27713
United States

Email: info@biorbyt.com, support@biorbyt.com

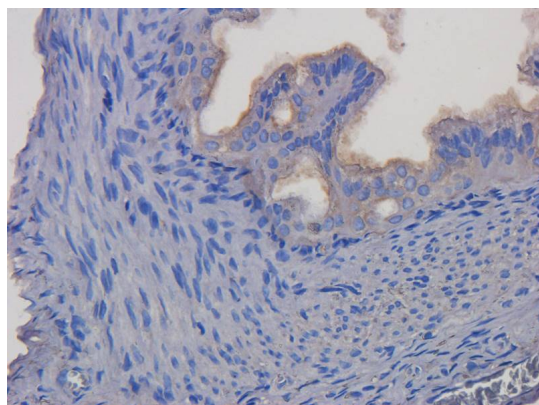
Phone: [+1 \(415\) 906-5211](tel:+1(415)906-5211) | Fax: [+1 \(415\) 651-8558](tel:+1(415)651-8558)



Immunohistochemical staining of rat ovary tissue using Estrogen Receptor beta 2 antibody (dilution of primary antibody - 2.5 ug/ml)



WB analysis of mouse heart (lane 1), mouse ovary (lane 2), human breast cancer (lane 3), human ovarian cancer (lane 4), rat spleen (lane 5), mouse lymph node (lane 6) using Estrogen Receptor beta 2 antibody (1 ug/ml)



Immunohistochemical staining of paraffin embedded rat ovary tissue using anti-Estrogen Receptor beta 2 (primary antibody at 2.5 ug/ml)

Biorbyt Ltd.

7 Signet Court, Swann Road
Cambridge
CB5 8LA
United Kingdom

Email: info@biorbyt.com, support@biorbyt.com

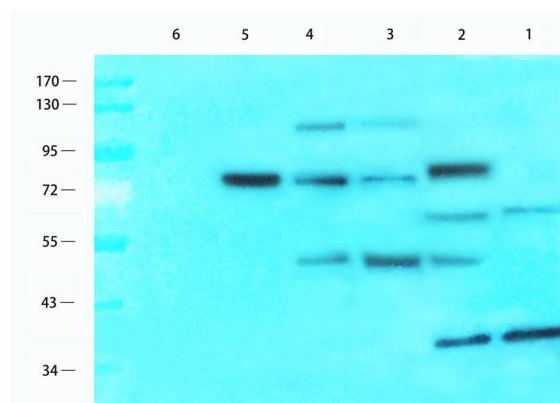
Phone: +44 (0)1223 859353 | Fax: +1 (415) 651-8558

Biorbyt LLC

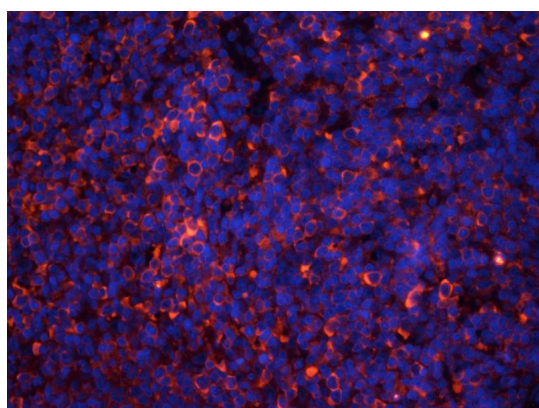
68 TW Alexander Drive
Research Triangle Park
Durham
NC 27713
United States

Email: info@biorbyt.com, support@biorbyt.com

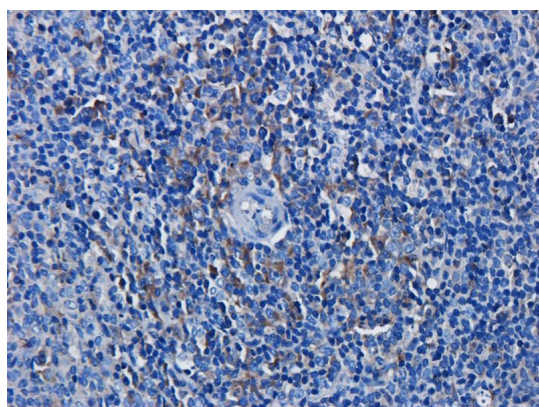
Phone: +1 (415) 906-5211 | Fax: +1 (415) 651-8558



Western blot analysis of mouse heart (lane 1), mouse ovary (lane 2), human breast cancer (lane 3), human ovarian cancer (lane 4), rat spleen (lane 5), mouse lymph node (lane 6) using Estrogen Receptor beta 2 antibody (1 ug/ml)



IF image of rat spleen tissue using anti-Estrogen Receptor beta 2 (primary antibody at 2.5 ug/ml)



IHC-P staining of rat spleen tissue using anti-Estrogen Receptor beta 2 (dilution at 2.5 ug/ml)

Biorbyt Ltd.

7 Signet Court, Swann Road
Cambridge
CB5 8LA
United Kingdom

Email: info@biorbyt.com, support@biorbyt.com

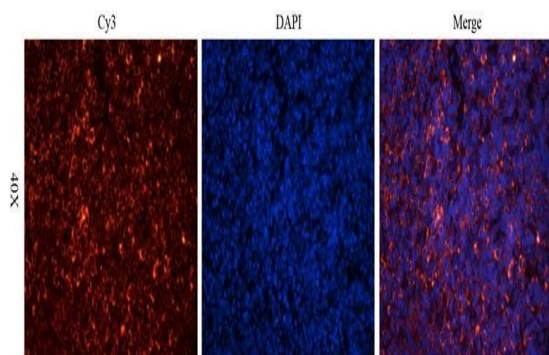
Phone: [+44 \(0\)1223 859353](tel:+44(0)1223859353) | Fax: [+1 \(415\) 651-8558](tel:+1(415)651-8558)

Biorbyt LLC

68 TW Alexander Drive
Research Triangle Park
Durham
NC 27713
United States

Email: info@biorbyt.com, support@biorbyt.com

Phone: [+1 \(415\) 906-5211](tel:+1(415)906-5211) | Fax: [+1 \(415\) 651-8558](tel:+1(415)651-8558)



Immunofluorescence analysis of rat spleen tissue using Estrogen Receptor beta 2 antibody (dilution of primary antibody - 2.5 ug/ml)

Biorbyt Ltd.

7 Signet Court, Swann Road
Cambridge
CB5 8LA
United Kingdom

Email: info@biorbyt.com, support@biorbyt.com

Phone: [+44 \(0\)1223 859353](tel:+44(0)1223859353) | Fax: [+1 \(415\) 651-8558](tel:+1(415)651-8558)

Biorbyt LLC

68 TW Alexander Drive
Research Triangle Park
Durham
NC 27713
United States

Email: info@biorbyt.com, support@biorbyt.com

Phone: [+1 \(415\) 906-5211](tel:+1(415)906-5211) | Fax: [+1 \(415\) 651-8558](tel:+1(415)651-8558)