

## Product Datasheet

### beta Actin Rabbit Polyclonal Antibody (orb10033)

<b>Catalog Number</b>	orb10033
<b>Category</b>	Antibodies
<b>Description</b>	beta Actin Rabbit Polyclonal Antibody
<b>Target</b>	beta Actin
<b>Clonality</b>	Polyclonal
<b>Species/Host</b>	Rabbit
<b>Isotype</b>	IgG
<b>Conjugation</b>	Unconjugated
<b>Reactivity</b>	Human, Mouse, Rat
<b>Form/Appearance</b>	C: 10 mM PBS, 0.02% Sodium Azide, 10 mg/ml rAlbumin, 50% Glycerol
<b>Concentration</b>	- 100 µg (in 200 µl): 0.5 mg/ml- 200 µg (in 400 µl): 0.5 mg/ml
<b>Purity</b>	Polyclonal antibodies are purified by peptide affinity chromatography
<b>Immunogen</b>	KLH conjugated synthetic peptide derived from human beta Actin. Please contact us for the exact immunogen sequence. The peptide is available as orb374699.
<b>UniProt ID</b>	<b>P60711, P60709, P60710</b>
<b>RRID</b>	AB_10749201
<b>MW</b>	42 kDa
<b>Tested applications</b>	ELISA, IHC-P, WB

**Biorbyt Ltd.**

7 Signet Court, Swann Road  
Cambridge  
CB5 8LA  
United Kingdom

Email: [info@biorbyt.com](mailto:info@biorbyt.com), [support@biorbyt.com](mailto:support@biorbyt.com)

Phone: [+44 \(0\)1223 859353](tel:+44(0)1223859353) | Fax: [+1 \(415\) 651-8558](tel:+1(415)651-8558)

**Biorbyt LLC**

68 TW Alexander Drive  
Research Triangle Park  
Durham  
NC 27713  
United States


Email: [info@biorbyt.com](mailto:info@biorbyt.com), [support@biorbyt.com](mailto:support@biorbyt.com)

Phone: [+1 \(415\) 906-5211](tel:+1(415)906-5211) | Fax: [+1 \(415\) 651-8558](tel:+1(415)651-8558)

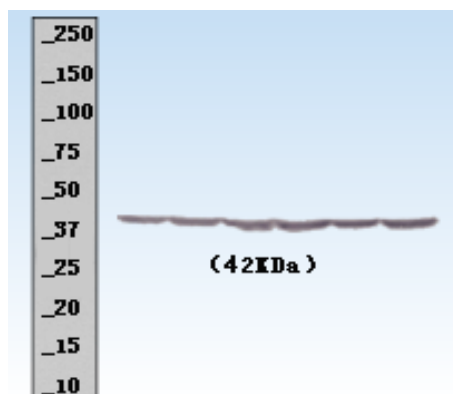
<b>Dilution range</b>	P-ELISA:1:500-1000, WB:1:100-500, IHC-P:1:100-500 (based on 0.5 mg/ml)
<b>Storage</b>	Maintain refrigerated at 2-8°C for up to 2 weeks. For long term storage store at -20°C in small aliquots to prevent freeze-thaw cycles.
<b>Note</b>	For research use only
<b>Entrez</b>	<b>60</b>
<b>NCBI</b>	<b>31, 001101, 11, 001092</b>
<b>Expiration Date</b>	12 months from date of receipt.

12%Gel  
Rat lung

beta-actin  
(42kD)



Western blot analysis of rat lung lysates using Beta Actin antibody



Western blot analysis of mouse brain lysate using Beta Actin antibody

**Biorbyt Ltd.**

7 Signet Court, Swann Road  
Cambridge  
CB5 8LA  
United Kingdom

Email: [info@biorbyt.com](mailto:info@biorbyt.com), [support@biorbyt.com](mailto:support@biorbyt.com)

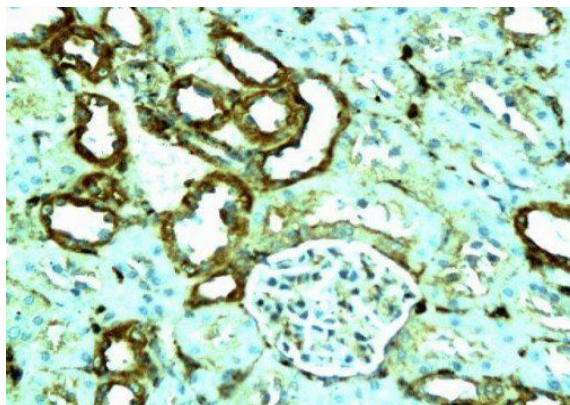
Phone: +44 (0)1223 859353 | Fax: +1 (415) 651-8558

**Biorbyt LLC**

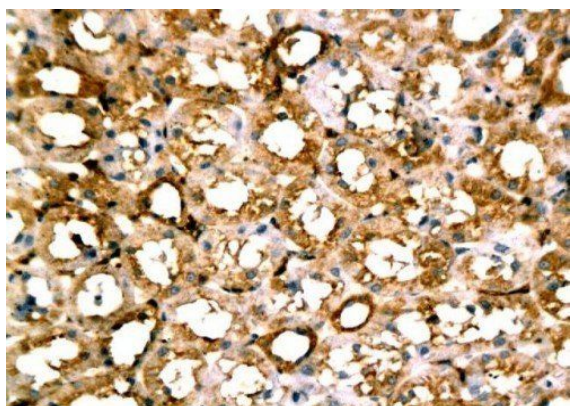
68 TW Alexander Drive  
Research Triangle Park  
Durham  
NC 27713  
United States

Email: [info@biorbyt.com](mailto:info@biorbyt.com), [support@biorbyt.com](mailto:support@biorbyt.com)

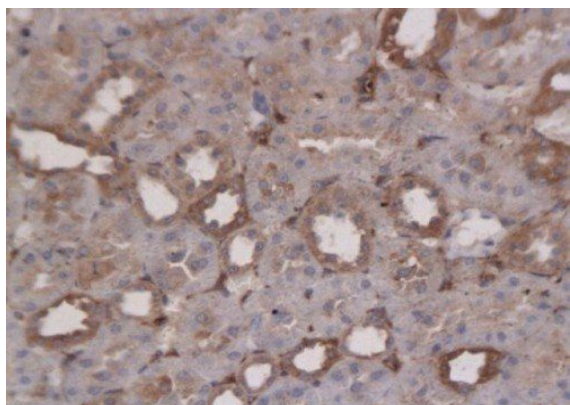
Phone: +1 (415) 906-5211 | Fax: +1 (415) 651-8558



Immunohistochemical staining of paraffin embedded rat renal glomerulus tissue stained with Beta Actin antibody



Immunohistochemical staining of paraffin embedded rat renal glomerulus tissue stained with Beta Actin antibody



Immunohistochemical staining of paraffin embedded rat renal glomerulus tissue stained with Beta Actin antibody (DAB as chromogen)

**Biorbyt Ltd.**

7 Signet Court, Swann Road  
Cambridge  
CB5 8LA  
United Kingdom

Email: [info@biorbyt.com](mailto:info@biorbyt.com), [support@biorbyt.com](mailto:support@biorbyt.com)

Phone: [+44 \(0\)1223 859353](tel:+44(0)1223859353) | Fax: [+1 \(415\) 651-8558](tel:+1(415)651-8558)

**Biorbyt LLC**

68 TW Alexander Drive  
Research Triangle Park  
Durham  
NC 27713  
United States

Email: [info@biorbyt.com](mailto:info@biorbyt.com), [support@biorbyt.com](mailto:support@biorbyt.com)

Phone: [+1 \(415\) 906-5211](tel:+1(415)906-5211) | Fax: [+1 \(415\) 651-8558](tel:+1(415)651-8558)