

# Anti-mCherry IHC

cell line pellets

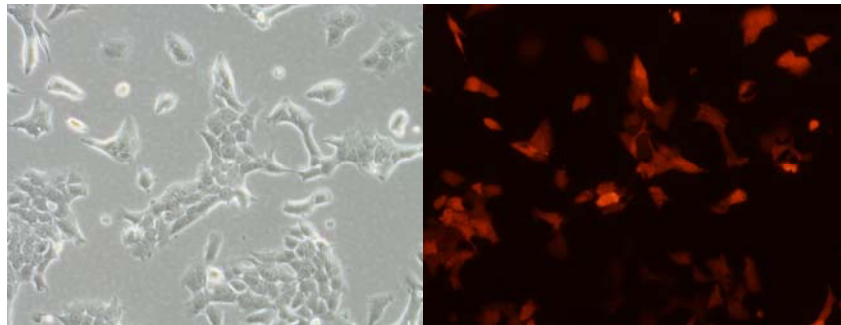
University of California, Davis

3.15.2013

# Mouse Mammary Tumor Cell Line

## Pellets used

- #1 Parental Cell line
  - Negative for mCherry expression
- #2 mCherry Cell line
  - 10x Images-below for expression
  - Positive for mCherry expression-Transduced with mCherry lentivirus



# Cell Line Pellet Processing

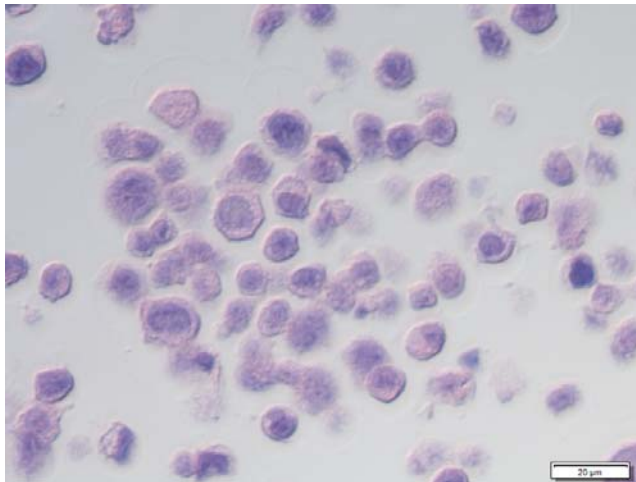
- Cells were trypsinized
- Spun down in media
- Fixed in 10% Neutral Buffered Formalin for 30mins Room Temp
- Washed
- Stored in 70% EtOH

# Antibodies

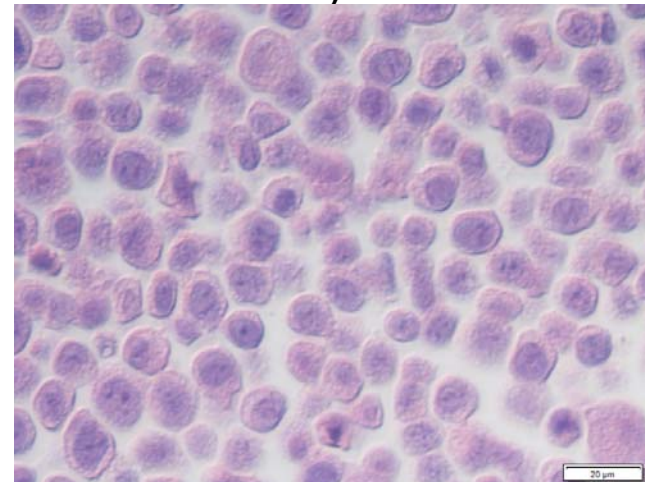
- A. Mouse anti-mCherry (Biorbyt orb66657)
  - Concentration = 1mg/mL
  - Tried at 1:200
- B. Goat anti-mCherry (Biorbyt orb11618)
  - Concentration = 3mg/mL
  - Tried at 1:500

# H&E of Cell Pellets

#1 Parental line



#2 mCherry line

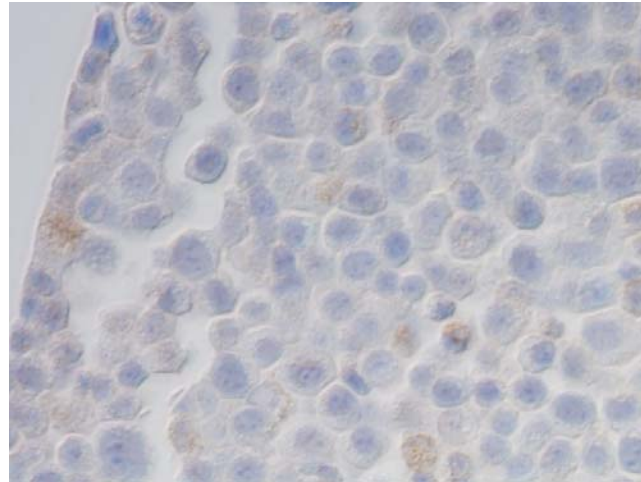


Cells look happy and healthy

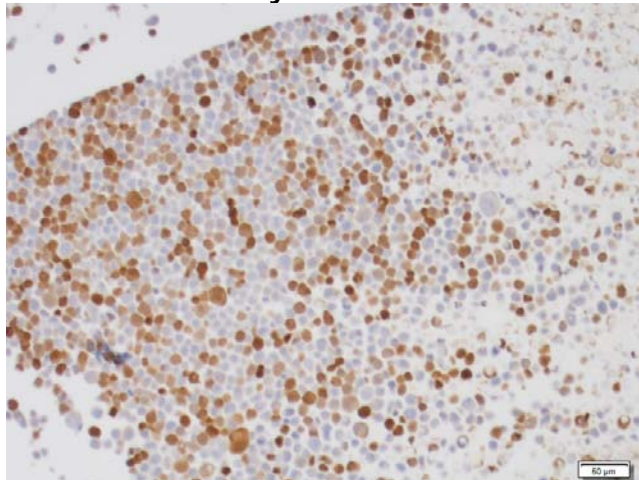
40x

# A. Mouse anti-mCherry

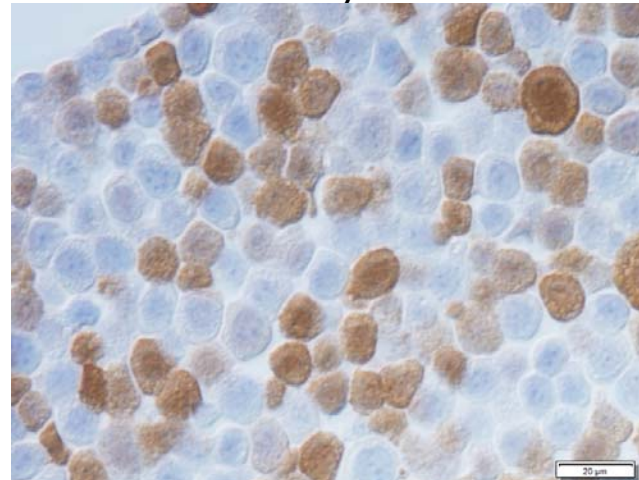
#1 Parental line



#2 mCherry line-10x



#2 mCherry line

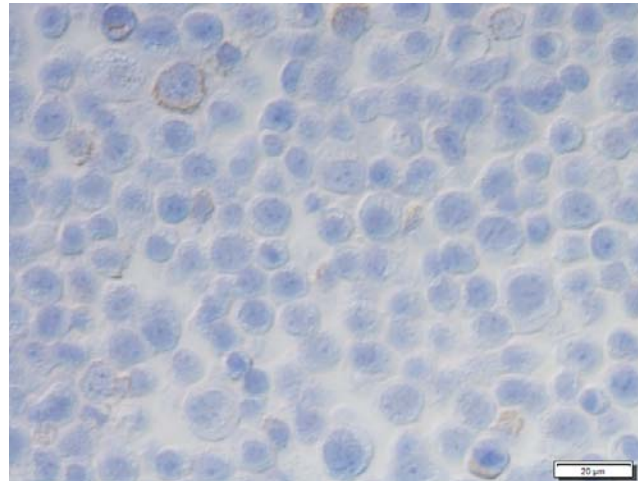


Only recognizes cells within mCherry transduced populations

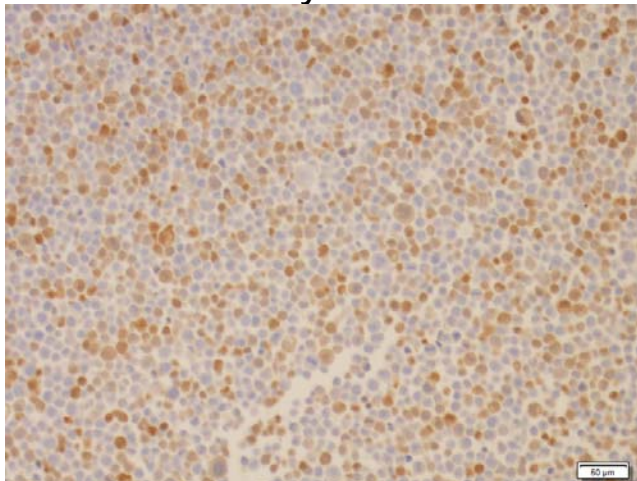
40x

# B. Goat anti-mCherry

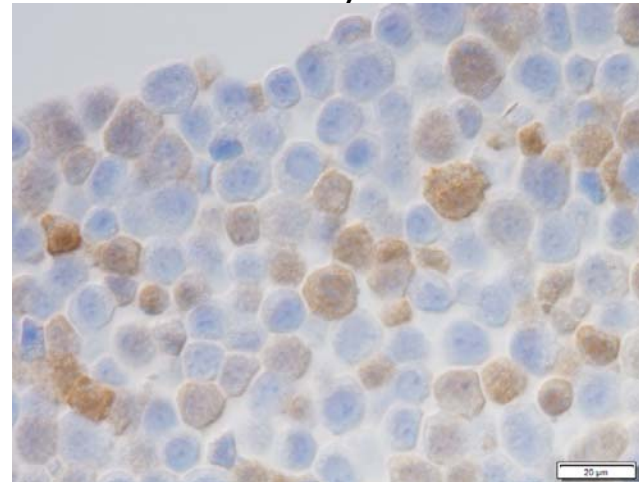
#1 Parental line



#2 mCherry line-10x



#2 mCherry line



Only recognizes cells within mCherry transduced populations

40x