

LMS antibody anti Leucomyosuppressin Rabbit, Polyclonal

Cat. No.	Amount
orb97727	100 µl

For *in vitro* use only
Quality guaranteed for 12 months
Store at -20°C

Avoid freeze / thaw cycles

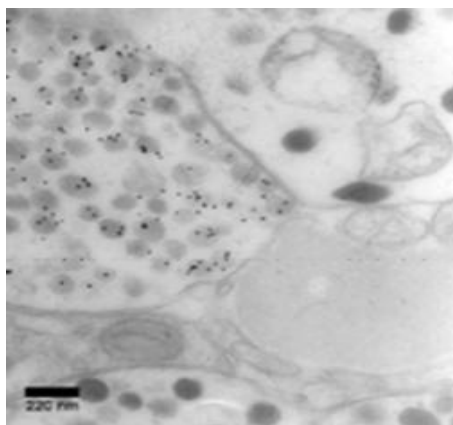


Fig.1
The distribution of LMS-immunoreactivity in the Corpus cardiacum of male adult *Periplaneta americana*. Postembedding immunogold labelling for LMS revealed that the majority of the gold particle was bound to one type of neurosecretory granules.

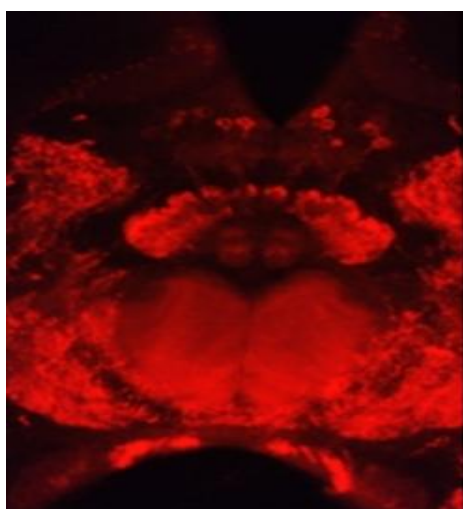


Fig.2

Form

Liquid. Supplied as serum, preserved in glycerol (50% saturation)

Application

Anti Leucomyosuppressin can be used for ELISA and Immunocytochemistry.

Description

Leucomyosuppressin, a member of the FMRF amide family first characterized from the cockroach *L. maderae*. This peptide has subsequently been identified in other insects, suggesting that it is highly conserved. Leucomyosuppressin (LMS) is an inhibitory modulator of heartbeat frequency in arthropods. The anti Leucomyosuppressin serum was raised in rabbits against the conjugate from synthetic pEDVDHVFLRFamide-glutaraldehyde-thyroglobuline.

Specificity

The anti Leucomyosuppressin serum displays no cross-reactivity with the insect neuropeptides Allatostatin, Corazonin, CCAP, Locustatachykinin II and Proctolin as tested by non-competitive ELISA. A crossreactivity to other myosuppressins (X1DVX2HX3FLRFamide) is untried. Postembedding immunogold labelling for LMS and Perisulfakinin (other RFa like peptide) revealed the gold particle were bound to different types of neurosecretory granules (Fig. 1). Immunocytochemical methods of brain (Fig. 2) and ventral nerve cords of *Periplaneta americana* indicate a specific distribution pattern.



Tel: +44-1223-859-353 Fax: +44-1223-280-240
Email: info@biorbyt.com VAT Nr.: GB 991815777

Biorbyt Ltd
5 Orwell Furlong, Cambridge, CB4 0WY, United Kingdom
Company No. 7479871, registered in England and Wales



Tel: +1-415-906-5211 Fax: +1-415-651-8558
Email: info@biorbyt.com EIN: 33-1226022

Biorbyt LLC
220 Montgomery Street, Suite 810
San Francisco, CA, 94104, United States

