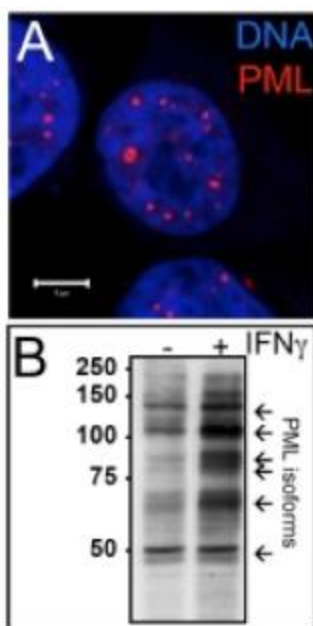


PML antibody

anti-human PML

Rabbit, Polyclonal

Cat. No.	Amount
orb122542	50 µl



For *in vitro* use only

Quality guaranteed for 12 months

Store in aliquots at -20°C.

Avoid freeze / thaw cycles

Form

Liquid. Supplied as serum.

Description

Polyclonal Antibody pABahPML(460-479)#3 to human PML.

Immunogen

The antibody binds to a peptide corresponding to amino acids 460-479 (KGPSYGEDVSNTTTQKRKC) of the human PML protein. No cross reaction with mouse PML protein was observed in Western blots. The immunogen peptide sequence is not conserved in rat, chimpanzee, dog, or bovine PML proteins.

Specificity

Antibody specificity was evaluated by indirect immunofluorescence and western blotting (see Figure 1A and B). The antibody detects all PML isoforms according to Condemine et al. (2006).

Application

Indirect Immunofluorescence 1:1000 to 1:2000

Western Blot 1:1000



Tel: +44-1223-859-353

Email: info@biorbyt.com

Biorbyt Ltd

5 Orwell Furlong, Cambridge, CB4 0WY, United Kingdom
Company No. 7479871, registered in England and Wales

Fax: +44-1223-280-240

VAT Nr.: GB 991815777



Tel: +1-415-906-5211

Email: info@biorbyt.com

Biorbyt LLC

220 Montgomery Street, Suite 810
San Francisco, CA, 94104, United States

Fax: +1-415-651-8558

EIN: 33-1226022

