

Human Chemerin/RARRES2 ELISA Kit

Cat #: orb182352 (manual)

For research use only. Not intended for diagnostic use.

Product Features

Size	96 wells/kit, with removable strips.
Sensitivity	<20 pg/ml
Range	78 pg/ml - 5,000 pg/ml
Sample Types	cell culture supernatants, cell lysates, serum and plasma (heparin, EDTA)
Standard Protein	Expression system for standard: E. coli; Immunogen sequence: V17-S163
Uniprot ID	Q99969
Storage	Store at 4°C for 6 months, at -20°C for 12 months. Avoid multiple freeze-thaw cycles (Ships with gel ice, can store for up to 3 days in room temperature. Freeze upon receiving.)

Background on RARRES2:

Chemerin, also known as RARRES2 or TIG2, is a protein encoded by the human RARRES2 gene located at chromosome 7q36.1. It is a potent chemoattractant for antigen-presenting cells and acts as a ligand for the G protein-coupled receptor CMKLR1 (ChemR23). Chemerin is secreted as inactive prochemerin and is activated by C-terminal cleavage through inflammatory and coagulation-related serine proteases, promoting chemotaxis of dendritic cells and macrophages. The active protein also functions as an adipokine.

Internal Test Data: N/A

Assay Principle

Human Chemerin/RARRES2 ELISA Kit is a solid-phase immunoassay specially designed to measure Human RARRES2 with a 96-well strip plate that is pre-coated with antibody specific to RARRES2. The detection antibody is a biotinylated antibody specific to RARRES2. The kit includes Human RARRES2 protein as standards.

To measure Human RARRES2, add standards and samples to the wells, then add the biotinylated detection antibody. Wash the wells with PBS or TBS buffer and add Avidin-Biotin-Peroxidase Complex (ABC-HRP). Wash away the unbounded ABC-HRP with PBS or TBS buffer and add TMB. TMB is an HRP substrate and will be catalyzed to produce a blue color product, which changes into yellow after adding the acidic stop solution. The absorbance of the yellow product at 450nm is linearly proportional to Human RARRES2 in the sample. Read the absorbance of the yellow product in each well using a plate reader and benchmark the sample wells' readings against the standard curve to determine the concentration of Human RARRES2 in the sample.

Kit Components

Item	Quantity	Volume	Storage of opened/reconstituted material
Anti-Human RARRES2 pre-coated 96-well Strip Microplate	1	12 strips of 8 wells	Return unused wells to the foil pouch. Reseal along the entire edge of the zip-seal. May be stored for up to 1 month at 4°C provided this is within the expiration date of the kit.
Human RARRES2 Standard	2	50 ng/tube	Discard the RARRES2 stock solution after 12 hours at 4°C. May be stored at -20°C for 48 hours.
Human RARRES2 Biotinylated Antibody (100x)	1	100 µl	May be stored for up to 1 month at 4°C provided this is within the expiration date of the kit.
Avidin-Biotin-Peroxidase Complex (100x)	1	100 µl	
Sample Diluent	1	30 ml	
Antibody Diluent	1	12 ml	
Avidin-Biotin-Peroxidase Diluent	1	12 ml	
Color Developing Reagent (TMB)	1	10 ml	
Stop Solution	1	10 ml	
Wash Buffer (25x)	1	20 ml	
Plate Sealers	4	Piece	

Preparations Before Assay

1. Read this manual in its entirety to minimize the chance of error.
2. Confirm that you have the appropriate non-supplied equipment available.
3. Confirm that the species, target antigen, and sensitivity of this kit are appropriate for your intended application.
4. Confirm that your samples have been prepared appropriately based upon recommendations (see Sample Preparation) and that you have sufficient sample volume for use in the assay.
5. When first using a kit, appropriate validation steps should be taken before using valuable samples. Confirm that the kit adequately detects the target antigen in your intended sample type(s) by running control samples.
6. If the concentration of target antigen within your samples is unknown, a preliminary experiment should be run using a control sample to determine the optimal sample dilution (see Sample Preparation).
7. To inspect the validity of experiment operation and the appropriateness of sample dilution proportion, a pilot experiment using standards and a small number of samples is recommended.
8. Before using the kit, spin tubes to bring down all components to the bottom of the tubes.

9. Don't let the 96-well plate dry out since this will inactivate active components on the plate.
10. Don't reuse tips and tubes to avoid cross-contamination.
11. Avoid using the reagents from different batches together.
12. The kit should not be used beyond the expiration date. Any variation in diluent, operator, pipetting technique, washing technique, incubation time or temperature, and kit age can cause variation in binding. Variations in sample collection, processing, and storage may cause sample value differences.

Materials Required but Not Supplied

1. Microplate reader capable of reading absorbance at 450 nm. Incubator.
2. Automated plate washer (optional)
3. Pipettes and pipette tips are capable of precisely dispensing 0.5 µl through 1 ml volumes of aqueous solutions.
4. Multichannel pipettes are recommended for a large number of samples.
5. Deionized or distilled water. 500 ml graduated cylinders.
6. Test tubes for dilution.

Sample Preparation

Sample Collection and Storage

These sample collection instructions and storage conditions are intended as a general guideline, and the sample stability has not been evaluated.

Sample dilution ratios should be determined by a pilot study (run a serial dilution of samples and see which dilution ratio results in the idea O.D., near the middle of the standard range). In general, high concentration samples can be diluted by 1:100, mid concentration samples 1:10, low concentration samples 1:2 or neat.

Sample Type	Procedure
Cell culture supernatants	Clear sample of particulates by centrifugation, assay immediately, or store samples at -20°C.
Serum	Use a serum separator tube (SST) and allow serum to clot at room temperature for about four hours. Then, centrifuge for 15 min at approximately 1,000 x g. assay immediately or store samples at -20°C.
Plasma	Collect plasma using heparin or EDTA as an anticoagulant. Centrifuge for 15 min at approximately 1,000 x g. Assay immediately or store samples at -20°C. *Note: it is important to not use anticoagulants other than the ones described above to treat plasma, for other anticoagulants could block the antibody binding site.
Cell lysates	Lyse the cells, make sure there are no visible cell sediments. Centrifuge cell lysates at approximately 10,000 x g for 5 min. Collect the supernatant.

Sample Dilution Guideline

The user needs to estimate the concentration of the target protein in the sample and use an appropriate dilution factor so that the diluted target protein concentration falls in the range of O.D. values of the

standard curve. Dilute the sample using provided diluent buffer. Pilot tests using a dilution series of each sample type are necessary. The sample must be mixed thoroughly with Sample Diluent.

Notes

1. It is recommended that samples are used immediately upon preparation.
2. Avoid repeated freeze/thaw cycles for all samples.
3. If a sample type not listed above is intended to be used with the kit, it is recommended that the customer conduct validation experiments in order to be confident in the results.
4. Due to chemical interference, the use of tissue or cell extraction samples prepared by chemical lysis buffers may result in inaccurate results.
5. Due to factors including cell viability, cell number, or sampling time, samples from cell culture supernatant may not be detected by the kit.
6. Samples should be brought to room temperature (18-25°C) before performing the assay without the use of extra heating.
7. Sample concentrations should be predicted before being used in the assay. If the sample concentration is not within the range of the standard curve, users must determine the optimal sample dilutions for their particular experiments.
8. We are responsible for the quality and performance of the kit components but is NOT responsible for the performance of customer supplied samples used with the kit.

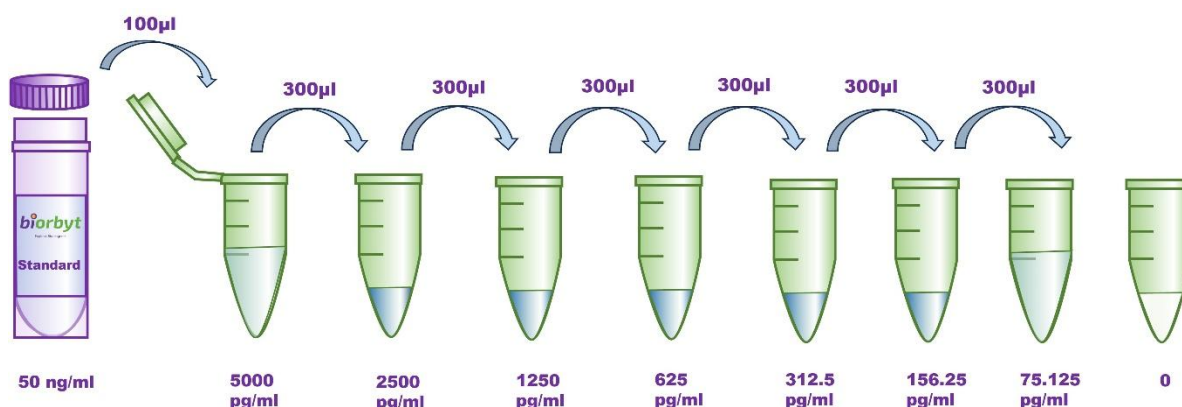
Reagent Preparation

Item	Preparation
All reagents	Bring all reagents to room temperature (18-25°C) prior to use. Please DO NOT equilibrate unused plate well strips to room temperature. They should be sealed and stored in the original packaging. The assay can also be done at room temperature however we recommend doing it at 37°C for best consistency with our QC results. Also, the TMB incubation time estimate (15-25 min) is based on incubation at 37°C.
Wash buffer	Prepare 500 ml of Working Wash Buffer by diluting the supplied 20 ml of Wash Buffer (25 x) with 480 ml of deionized or distilled water. If crystals have formed in the concentrate, warm to room temperature and mix it gently until crystals have completely dissolved.
Biotinylated Anti-Human RARRES2 antibody	It is recommended to prepare this reagent immediately prior to use by diluting the Human RARRES2 Biotinylated antibody (100x) 1:100 with Antibody Diluent. Prepare 100 µl by adding 1 µl of Biotinylated antibody (100x) to 99 µl of Antibody Diluent for each well. Mix gently and thoroughly and use within 2 hours of generation.
Avidin-Biotin-Peroxidase Complex	It is recommended to prepare this reagent immediately prior to use by diluting the Avidin-Biotin-Peroxidase Complex (100x) 1:100 with Avidin-Biotin-Peroxidase Diluent. Prepare 100 µl by adding 1 µl of Avidin-Biotin-Peroxidase Complex (100x) to 99 µl of Avidin-Biotin-Peroxidase Diluent for each well. Mix gently and thoroughly and use within 2 hours of generation.
Human RARRES2 Standard	It is recommended that the standards be prepared no more than 2 hours prior to performing the experiment. Use one 50 ng of lyophilized Human RARRES2 standard for each experiment. Gently spin the vial prior to use. Reconstitute the standard to a stock concentration of 50 ng/ml using 1ml of sample diluent.

	Allow the standard to sit for a minimum of 10 minutes with gentle agitation prior to making dilutions.
Microplate	The included microplate is coated with capture antibodies and is ready-to-use. It does not require additional washing or blocking. The unused well strips should be sealed and stored in the original packaging.
Samples	Dilute the sample so that the expected range of concentrations fall within the detection range of this kit. If the expected range of concentration is unknown, a pilot test should be conducted to decide the optimal dilution ratio for your samples. Some PubMed article(s) citing the expression level of this target are as follows: 25664056, 25651894, 25539827

Dilution of Human RARRES2 Standard

1. Number tubes 1-8. Final Concentrations to be Tube # 1: 5,000.00 pg/ml, # 2: 2,500.00 pg/ml, # 3: 1,250.00 pg/ml, # 4: 625.00 pg/ml, # 5: 312.50 pg/ml, # 6: 156.25 pg/ml, # 7: 78.13 pg/ml, # 8: Sample Diluent serves as the zero standard (0 pg/ml).
2. To generate standard #1, add 100 µl of the reconstituted standard stock solution of 50 ng/ml and 900 µl of sample diluent to tube #1 for a final volume of 1000 µl. Mix thoroughly.
3. Add 300 µl of sample diluent to tubes # 2-7.
4. To generate standard # 2, add 300 µl of standard # 1 from tube # 1 to tube # 2 for a final volume of 600 µl. Mix thoroughly.
5. To generate standard # 3, add 300 µl of standard # 2 from tube # 2 to tube # 3 for a final volume of 600 µl. Mix thoroughly.
6. Continue the serial dilution for tube # 4-7.



Assay Procedure

1. Prepare all reagents and working standards as directed previously.
2. Remove excess microplate strips from the plate frame and seal and store them in the original packaging.
3. Add 100 µl of the standard, samples, or control per well. Add 100 µl of the Sample Diluent into the zero well. At least two replicates of each standard, sample, or control is recommended.
4. Cover with the plate sealer provided and incubate for 120 minutes at room temperature (or 90 min. at 37 °C).

5. Remove the cover and discard the liquid in the wells into an appropriate waste receptacle. Invert the plate on the benchtop into a paper towel and tap the plate to gently blot any remaining liquid. It is recommended that the wells are not allowed to completely dry at any time.
6. Add 100 μ l of the prepared 1x Biotinylated Anti-Human RARRES2 antibody to each well.
7. Cover with a plate sealer and incubate for 90 minutes at room temperature (or 60 minutes at 37°C).
8. Wash the plate 3 times with the 1x wash buffer:
 - a. Discard the liquid in the wells into an appropriate waste receptacle. Then, invert the plate on the benchtop into a paper towel and tap the plate to gently blot any remaining liquid. It is recommended that the wells are not allowed to completely dry at any time.
 - b. Add 300 μ l of the 1x wash buffer to each assay well. (For cleaner background incubate for 60 seconds between each wash).
 - c. Repeat steps a-b 2 additional times.
 - d. Discard the wash buffer in the wells into an appropriate waste receptacle. Then, invert the plate on the benchtop into a paper towel and tap the plate to gently blot any remaining liquid.
9. Add 100 μ l of the prepared 1x Avidin-Biotin-Peroxidase Complex into each well. Cover with the plate sealer provided and incubate for 40 minutes at RT (or 30 minutes at 37°C).
10. Wash the plate 5 times with the 1x wash buffer:
 - a. Discard the liquid in the wells into an appropriate waste receptacle. Then, invert the plate on the benchtop into a paper towel and tap the plate to gently blot any remaining liquid. It is recommended that the wells are not allowed to completely dry at any time.
 - b. Add 300 μ l of the 1x wash buffer to each assay well. (For cleaner background incubate for 60 seconds between each wash).
 - c. Repeat steps a-b 4 additional times.
 - d. Discard the wash buffer in the wells into an appropriate waste receptacle. Then, invert the plate on the benchtop into a paper towel and tap the plate to gently blot any remaining liquid.
11. Add 90 μ l of Color Developing Reagent to each well. Cover with the plate sealer provided and incubate in the dark for 30 minutes at RT (or 15-25 minutes at 37°C). (The optimal incubation time must be empirically determined. A guideline to look for is blue shading the top four standard wells, while the remaining standards remain clear.)
12. Add 100 μ l of Stop Solution to each well. The color should immediately change to yellow.
13. Within 30 minutes of stopping the reaction, the O.D. absorbance should be read with a microplate reader at 450nm.

Notes:

1. Solutions: To avoid cross-contamination, change pipette tips between additions of each standard, between sample additions, and between reagent additions. Also, use separate reservoirs for each reagent.
2. Applying Solutions: All solutions should be added to the bottom of the ELISA plate well. Avoid touching the inside wall of the well. Avoid foaming when possible.
3. Assay Timing: The interval between adding samples to the first and last wells should be minimized. Delays will increase the incubation time differential between wells, which will significantly affect the

experimental accuracy and repeatability. For each step in the procedure, total dispensing time for addition of reagents or samples should not exceed 10 minutes.

4. **Incubation:** To prevent evaporation and ensure accurate results, proper adhesion of plate sealers during incubation steps is necessary. Do not allow wells to sit uncovered for extended periods of time between incubation steps. Do not let wells dry out at any time during the assay. Strictly observe the recommended incubation times and temperatures.
5. **Washing:** Proper washing procedure is critical. Insufficient washing will result in poor precision and falsely elevated absorbance readings. Residual liquid in the reaction wells should be patted dry against absorbent paper during the washing process. Do not put absorbent paper directly into the reaction wells.
6. **Controlling Substrate Reaction Time:** After the addition of the TMB Substrate, periodically monitor the color development. Stop color development before the color becomes too deep by adding Stop Solution. The excessively strong color will result in inaccurate absorbance readings.
7. **Reading:** The microplate reader should be preheated and programmed prior to use. Prior to taking O.D. readings, remove any residual liquid or fingerprints from the underside of the plate and confirm that there are no bubbles in the wells.
8. **Reaction Time Control:** Control reaction time should be strictly followed as outlined.
9. **Stop Solution:** The Stop Solution contains acid, therefore proper precautions should be taken during its use, such as protection of the eyes, hands, face, and clothing.
10. To minimize the external influence on the assay performance, operational procedures and lab conditions (such as room temperature, humidity, incubator temperature) should be strictly controlled. It is also strongly suggested that the whole assay is performed by the same operator from the beginning to the end.

Calculation of Results

To analyze using manual methods, follow the process below:

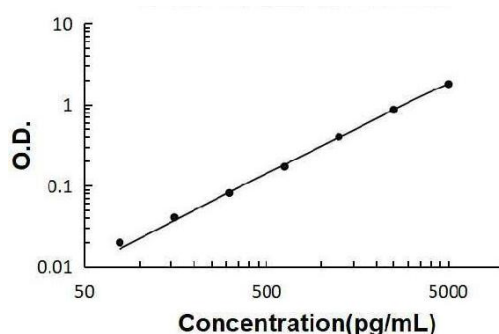
Average the duplicate readings for each standard, sample, and control. Subtract the average zero standard O.D. reading.

It is recommended that a standard curve be created using computer software to generate a four-parameter logistic (4-PL) curve-fit. A free program capable of generating a four-parameter logistic (4-PL) curve-fit can be found online at: www.myassays.com/four-parameter-logistic-curve.assay. Alternatively, plot the mean absorbance for each standard against the concentration. The measured concentration in the sample can be interpolated by using linear regression of each average relative O.D. against the standard curve generated using curve fitting software. This will generate an adequate but less precise fit of the data.

For diluted samples, the concentration reading from the standard curve must be multiplied by the dilution factor.

Standard Curve Example

Concentration	0	78	156	312	625	1250	2500	5000
O.D.	0.09	0.171	0.211	0.345	0.532	0.89	1.558	2.342



Human Chemerin/RARRES2 ELISA Kit standard curve

A standard curve is provided for demonstration only. A standard curve should be generated for each set of samples assayed.

Performance

Sensitivity: <20 pg/ml

The sensitivity or the minimum detectable dose (MDD) is the lower limit of the target protein that can be detected by the kit. It is determined by adding two standard deviations to the mean O.D. value of twenty (20) blank wells and calculating the corresponding concentration.

Precision:

Intra-Assay Precision (Precision within an assay): Three samples of known concentration were tested on one plate to assess intra-assay precision.

Inter-Assay Precision (Precision across assays): Three samples of known concentration were tested in separate assays to assess inter-assay precision.

	Intra-Assay Precision			Inter-Assay Precision		
Sample	1	2	3	1	2	3
n	16	16	16	24	24	24
Mean (pg/ml)	107	508	2037	113	519	1850
Standard deviation	5.02	32.53	154.86	6.81	42.05	172.13
CV (%)	4.7%	6.4%	7.6%	6%	8.1%	9.3%

Specificity: Natural and recombinant Human RARRES2

Cross-reactivity: This kit is for the detection of Human RARRES2. No significant cross-reactivity or interference between RARRES2 and its analogs was observed. This claim is limited by existing techniques; therefore, cross-reactivity may exist with untested analogs.

ELISA Troubleshooting

High background/non-specific staining

Description of results	Possible reason	Recommendations and precautions
After termination, the whole plate results show a uniform yellow or light color; or the Standard curve is linear but the background is too high	The yellowing of the whole plate may be caused by wrong addition of other reagents	Check the components and lot numbers of the reagents before the experiment, and confirm that all components belong to the corresponding kit. Reagents from different kits or different lot numbers cannot be mixed.
	ELISA plate was not washed sufficiently	Make sure that the same amount of Washing Solution is added to each microwell during the washing process. After washing, press the ELISA plate firmly on the absorbent paper to remove the residual buffer.
	Incubation time too long	Please strictly follow the steps of the manual
	Streptavidin-HRP contaminates the tip and TMB container or positive control contaminates the Pre-coated Microplate	When absorbing different reagents, the tips should be replaced. When configuring different reagent components, different storage vessels should be used. Please use a pipette during operation.
	Biotinylated Antibody or Streptavidin-HRP concentration too high	Check whether the concentration calculation is correct or use after further dilution.

	Substrate exposure or contamination prior to use	Store in the dark at all times before adding substrate.
	Color development time is too long	Please strictly follow the steps of the manual.
	The wrong filter was used when the absorbance value was read	When TMB is used as the substrate, the absorbance should be read at 450 nm.

NO color plates

Description of results	Possible reason	Recommendations and precautions
After the color development step, all wells of the ELISA plate are colorless; the positive control is not obvious	Mixed use of component reagents	Please read labels clearly when preparing or using
	In the process of plate washing and sample enzyme contaminated addition, the marker is and inactivated, and loses its ability to catalyze the color developing agent	Confirm that the container holding the ELISA plate does not contain enzyme inhibitors (such as NaN_3 , etc.) and confirm that the container for preparing the Wash Solution has been washed.
	Missing a reagent or a step	Review the manual in detail and strictly follow the operating steps

Light color

Description of results	Possible reason	Recommendations and precautions
The Standard is normal, the color of the sample is light	The sample uses NaN_3 preservative, which inhibits the reaction of the enzyme	Samples cannot use NaN_3
	The sample to be tested may not contain strong positive samples, so the result may be normal	In case of doubt, please test again.
The visual result is normal, but the reading value of the microplate reader is low	Wrong filter used for absorbance reading	When TMB is used as the substrate, the absorbance should be read at 450 nm.
All wells, including Standard and Samples, are lighter in color	Insufficient incubation time	Timer accurate timing
	Insufficient color reaction	Usually 15 - 30 minutes
	The number of washings increases, and the dilution ratio of the concentrated lotion does not meet the requirements	Reduce the impact of washing, dilute the concentrated lotion and washing time according to the manual, and accurately record the washing times and dosage.
	Distilled water quality problem	The prepared lotion must be tested to see if the pH value is neutral.

	In the process of plate washing and sample addition, the enzyme marker is contaminated and inactivated, and loses its ability to catalyze the color developing agent.	Confirm that the container holding the ELISA plate does not contain enzyme inhibitors (such as NaN_3 , etc.), confirm that the container for preparing the Washing Solution has been washed, and confirm that the purified water for preparing the Washing Solution meets the requirements and is not contaminated.
	The kit has expired or been improperly stored	Please use it within the expiration and store it in accordance with the storage conditions recommended in the manual to avoid contamination.
	Reagents and samples are not equilibrated before use	All reagents and samples should be equilibrated at room temperature for about 30 minutes.
	Insufficient suction volume of the pipette, too fast discharge of pipetting suction, too much liquid hanging on the inner wall of the tip or the inner wall is not clean.	To calibrate the pipette, the tips should be matched, each time the tips should fit tightly, the pipetting should not be too fast, and the discharge should be complete. The inner wall of the tips should be clean, and it is best to use it once.
Poor repeatability	Incubation temperature constant temperature effect is not good	Keep the temperature constant to avoid the local temperature being too high or too low
	When adding liquid, too much remains on the medial wall of wells	When adding liquid, the tip should try to add liquid along the bottom of the medial wall of wells without touching the bottom of the hole.
	Reuse of consumables	The tips should be replaced when different reagents are drawn, and different storage vessels should be used when configuring different reagent components.
	The bottom of the microwell is scratched or there is dirt	Be careful when operating, be careful not to touch the bottom and wipe the bottom of the microplate to remove dirt or fingerprints.
	Cross-contamination during sample addition	Technical repetition of the same sample for 3 times, including more than 2 approximate values. Try to avoid cross-contamination when adding samples
The color of plate is chaotic and irregular	Cross-contamination from manual plate washing	When washing the plates by hand, the first 3 injections of the lotion should be discarded immediately, and the soaking time should be set for the next few times to reduce cross-contamination.
	Cross-contamination when clapping	Use a suitable absorbent paper towel when clapping the plate, do not pat irrelevant substances into the well of the plate, and

		try not to pat in the same position to avoid cross-contamination.
--	--	---

Description of results	Possible reason	Recommendations and precautions
The color of plate is chaotic and irregular	The liquid filling head of the plate washer is blocked, resulting in unsatisfactory liquid addition or large residual amount of liquid suction, resulting in the color of plate is chaotic and irregular	Unblock the liquid addition head, so that each well is filled with washing liquid when washing the plate and the residual amount should be small when aspirating liquid.
	Incomplete centrifugation of the sample, resulting in coagulation in the reaction well or interference of sediment or residual cellular components	Serum plasma should be fully centrifuged at 3000 rpm for more than 6 minutes
	The sample is stored for too long time, resulting in contamination.	Samples should be kept fresh or stored at low temperature to prevent contamination
	Incorrect preparation of Washing Solution or direct misuse of concentrated Washing Solution	Please configure according to the manual

Declaration

1. For research use only. Not intended for diagnostic use.
2. The kit may not be suitable for special experimental samples where the validity of the experiment itself is uncertain, such as gene knockout experiments.
3. Certain natural or recombinant proteins, including prokaryotic and eukaryotic recombinant proteins, may not be detected because they do not match the detection antibody and capture antibody used in this product.

This kit is not compared with similar kits from other manufacturers or products with different methods to detect the same object, so inconsistent test results cannot be ruled out.

Safety Notes

1. This kit is only used for lab research and development and should not be used for humans or animals.
2. Reagents should be regarded as hazardous substances and should be handled carefully and correctly.
3. Gloves, lab coats, and goggles should always be worn to avoid skin and eyes coming into contact with Stop Solution and TMB. In case of contact, wash thoroughly with water.