

## OSR1 rabbit pAb

**Cat#: orb774846 (Manual)**

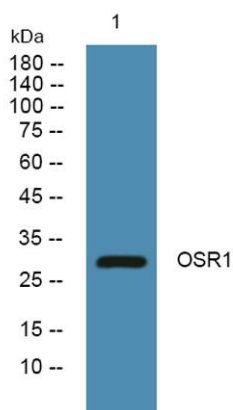
For research use only. Not intended for diagnostic use.

<b>Product Name</b>	OSR1 rabbit pAb
<b>Host species</b>	Rabbit
<b>Applications</b>	WB;ELISA
<b>Species Cross-Reactivity</b>	Human;Mouse;Rat
<b>Recommended dilutions</b>	WB 1:500-2000 ELISA 1:5000-20000
<b>Immunogen</b>	Synthesized peptide derived from part region of human protein
<b>Specificity</b>	OSR1 Polyclonal Antibody detects endogenous levels of protein.
<b>Formulation</b>	Liquid in PBS containing 50% glycerol, and 0.02% sodium azide..
<b>Storage</b>	Store at -20°C. Avoid repeated freeze-thaw cycles.
<b>Protein Name</b>	Protein odd-skipped-related 1
<b>Gene Name</b>	OSR1 ODD
<b>Cellular localization</b>	Nucleus .
<b>Purification</b>	The antibody was affinity-purified from rabbit antiserum by affinity-chromatography using epitope-specific immunogen.
<b>Clonality</b>	Polyclonal

<b>Concentration</b>	1 mg/ml
<b>Observed band</b>	29kD
<b>Human Gene ID</b>	130497
<b>Human Swiss-Prot Number</b>	Q8TAX0
<b>Alternative Names</b>	

#### Background

similarity:Belongs to the Odd C2H2-type zinc-finger protein family.,similarity:Contains 3 C2H2-type zinc fingers.,tissue specificity:Expressed in adult colon, small intestine, prostate, testis, and fetal lung.,



Western blot analysis of lysates from U2OS cells, primary antibody was diluted at 1:1000, 4° over night