

**DERL3 rabbit pAb****Cat#: orb774844 (Manual)**

For research use only. Not intended for diagnostic use.

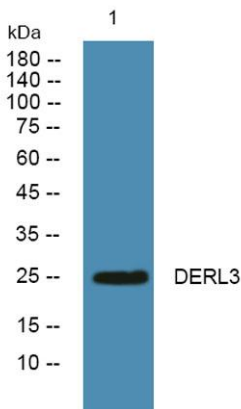
|                                 |   |
|---------------------------------|---|
| <b>Product Name</b>             | DERL3 rabbit pAb  |
| <b>Host species</b>             | Rabbit  |
| <b>Applications</b>             | WB;ELISA  |
| <b>Species Cross-Reactivity</b> | Human;Mouse   |
| <b>Recommended dilutions</b>    | WB 1:500-2000 ELISA 1:5000-20000  |
| <b>Immunogen</b>                | Synthesized peptide derived from part region of human protein   |
| <b>Specificity</b>              | DERL3 Polyclonal Antibody detects endogenous levels of protein.   |
| <b>Formulation</b>              | Liquid in PBS containing 50% glycerol, and 0.02% sodium azide..   |
| <b>Storage</b>                  | Store at -20°C. Avoid repeated freeze-thaw cycles.  |
| <b>Protein Name</b>             | Derlin-3 (Degradation in endoplasmic reticulum protein 3) (DERtrin-3) (Der1-like protein 3)                           |
| <b>Gene Name</b>                | DERL3 C22orf14 DER3 LLN2  |
| <b>Cellular localization</b>    | Endoplasmic reticulum membrane ; Multi-pass membrane protein .  |
| <b>Purification</b>             | The antibody was affinity-purified from rabbit antiserum by affinity-chromatography using epitope-specific immunogen. |
| <b>Clonality</b>                | Polyclonal  |

|                                |         |
|--------------------------------|---------|
| <b>Concentration</b>           | 1 mg/ml |
| <b>Observed band</b>           | 25kD    |
| <b>Human Gene ID</b>           | 91319   |
| <b>Human Swiss-Prot Number</b> | Q96Q80  |

#### Alternative Names

#### Background

derlin 3(DERL3) Homo sapiens The protein encoded by this gene belongs to the derlin family, and resides in the endoplasmic reticulum (ER). Proteins that are unfolded or misfolded in the ER must be refolded or degraded to maintain the homeostasis of the ER. This protein appears to be involved in the degradation of misfolded glycoproteins in the ER. Several alternatively spliced transcript variants encoding different isoforms have been identified for this gene. [provided by RefSeq, Oct 2008],



Western blot analysis of lysates from U2OS cells, primary antibody was diluted at 1:1000, 4° over night