

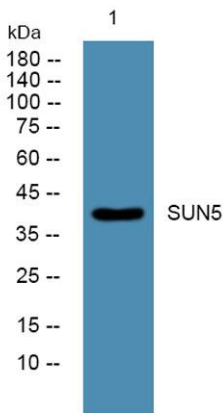
SUN5 rabbit pAb**Cat#: orb774836 (Manual)**

For research use only. Not intended for diagnostic use.

Product Name	SUN5 rabbit pAb
Host species	Rabbit
Applications	WB;ELISA
Species Cross-Reactivity	Human;Rat;Mouse;
Recommended dilutions	WB 1:500-2000 ELISA 1:5000-20000
Immunogen	Synthesized peptide derived from part region of human protein
Specificity	SUN5 Polyclonal Antibody detects endogenous levels of protein.
Formulation	Liquid in PBS containing 50% glycerol, and 0.02% sodium azide..
Storage	Store at -20°C. Avoid repeated freeze-thaw cycles.
Protein Name	SUN domain-containing protein 5 (Sad1 and UNC84 domain-containing protein 5) (Sperm-associated antigen 4-like protein) (Testis and spermatogenesis-related gene 4 protein)
Gene Name	SUN5 SPAG4L TSARG4
Cellular localization	Nucleus inner membrane ; Single-pass membrane protein . Golgi apparatus . During spermiogenesis, traffics through the Golgi apparatus before reaching the round spermatid inner membrane of the nuclear envelope and later migrates to the coupling apparatus of the sperm during sperm head elongation and differentiation. In mature spermatozoa, is localized to the coupling apparatus of the sperm head and tail in the implementation fossa. .

Purification	The antibody was affinity-purified from rabbit antiserum by affinity-chromatography using epitope-specific immunogen.
Clonality	Polyclonal
Concentration	1 mg/ml
Observed band	41kD
Human Gene ID	140732
Human Swiss-Prot Number	Q8TC36
Alternative Names	

Background similarity:Contains 1 Unc84 (SUN) domain.,tissue specificity:Widely expressed.,



Western blot analysis of lysates from SW480 cells, primary antibody was diluted at 1:1000, 4° over night