

LRIG1 rabbit pAb

Cat#: orb774725 (Manual)

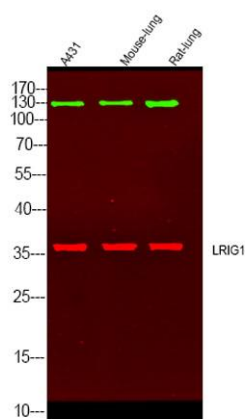
For research use only. Not intended for diagnostic use.

Product Name	LRIG1 rabbit pAb
Host species	Rabbit
Applications	WB;ELISA
Species Cross-Reactivity	Human;Mouse
Recommended dilutions	WB 1:500-2000 ELISA 1:5000-20000
Immunogen	Synthesized peptide derived from part region of human protein
Specificity	LRIG1 Polyclonal Antibody detects endogenous levels of protein.
Formulation	Liquid in PBS containing 50% glycerol, and 0.02% sodium azide..
Storage	Store at -20°C. Avoid repeated freeze-thaw cycles.
Protein Name	Leucine-rich repeats and immunoglobulin-like domains protein 1 (LIG-1)
Gene Name	LRIG1 LIG1
Cellular localization	Cell membrane ; Single-pass type I membrane protein .
Purification	The antibody was affinity-purified from rabbit antiserum by affinity-chromatography using epitope-specific immunogen.
Clonality	Polyclonal

Concentration	1 mg/ml
Observed band	120kD
Human Gene ID	26018
Human Swiss-Prot Number	Q96JA1
Alternative Names	

Background

domain:The LRRs and the Ig-domains are each sufficient for EGFR/ERBB1 binding. This interaction is abolished only when these two domains are deleted.,function:Act as a feedback negative regulator of signaling by receptor tyrosine kinases, through a mechanism that involves enhancement of receptor ubiquitination and accelerated intracellular degradation.,induction:By EGF.,similarity:Contains 17 LRR (leucine-rich) repeats.,similarity:Contains 3 Ig-like C2-type (immunoglobulin-like) domains.,subunit:Interacts with EGFR/ERBB1, ERBB2, ERBB3 and ERBB4.,tissue specificity:Widely expressed.,



Western Blot analysis of various cell lysis. Primary Antibody was diluted at 1:1000. Secondary antibody(catalog#:RS23920) was diluted at 1:10000