

**ABI3 rabbit pAb****Cat#: orb774670 (Manual)**

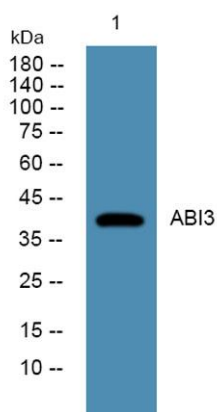
For research use only. Not intended for diagnostic use.

<b>Product Name</b>	ABI3 rabbit pAb
<b>Host species</b>	Rabbit
<b>Applications</b>	WB;ELISA
<b>Species Cross-Reactivity</b>	Human;Mouse
<b>Recommended dilutions</b>	WB 1:500-2000 ELISA 1:5000-20000
<b>Immunogen</b>	Synthesized peptide derived from part region of human protein AA range: 286-336
<b>Specificity</b>	ABI3 Polyclonal Antibody detects endogenous levels of protein.
<b>Formulation</b>	Liquid in PBS containing 50% glycerol, and 0.02% sodium azide..
<b>Storage</b>	Store at -20°C. Avoid repeated freeze-thaw cycles.
<b>Protein Name</b>	ABI gene family member 3 (New molecule including SH3) (Nesh)
<b>Gene Name</b>	ABI3 NESH
<b>Cellular localization</b>	Cytoplasm . Colocalizes with PAK2 at leading edge of cells.
<b>Purification</b>	The antibody was affinity-purified from rabbit antiserum by affinity-chromatography using epitope-specific immunogen.
<b>Clonality</b>	Polyclonal

<b>Concentration</b>	1 mg/ml
<b>Observed band</b>	40kD
<b>Human Gene ID</b>	51225
<b>Human Swiss-Prot Number</b>	Q9P2A4
<b>Alternative Names</b>	

### Background

This gene encodes a member of an adaptor protein family. Members of this family encode proteins containing a homeobox homology domain, proline rich region and Src-homology 3 (SH3) domain, and are components of the Abi/WAVE complex which regulates actin polymerization. The encoded protein inhibits ectopic metastasis of tumor cells as well as cell migration. This may be accomplished through interaction with p21-activated kinase. Alternative splicing results in multiple transcript variants. [provided by RefSeq, Sep 2013],



**Western blot analysis of lysates from PC12 cells, primary antibody was diluted at 1:1000, 4° over night**