

TAAR9 rabbit pAb

Cat#: orb774519 (Manual)

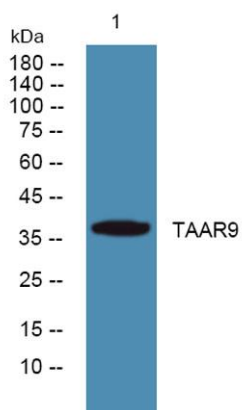
For research use only. Not intended for diagnostic use.

Product Name	TAAR9 rabbit pAb
Host species	Rabbit
Applications	WB;ELISA
Species Cross-Reactivity	Human;Rat;Mouse
Recommended dilutions	WB 1:500-2000 ELISA 1:5000-20000
Immunogen	Synthesized peptide derived from human protein . at AA range: 110-190
Specificity	TAAR9 Polyclonal Antibody detects endogenous levels of protein.
Formulation	Liquid in PBS containing 50% glycerol, and 0.02% sodium azide..
Storage	Store at -20°C. Avoid repeated freeze-thaw cycles.
Protein Name	Trace amine-associated receptor 9 (TaR-9) (Trace amine receptor 9) (Trace amine receptor 3) (TaR-3)
Gene Name	TAAR9 TA3 TAR3 TRAR3
Cellular localization	Cell membrane; Multi-pass membrane protein.
Purification	The antibody was affinity-purified from rabbit antiserum by affinity-chromatography using epitope-specific immunogen.
Clonality	Polyclonal

Concentration	1 mg/ml
Observed band	38kD
Human Gene ID	134860
Human Swiss-Prot Number	Q96RI9
Alternative Names	

Background

TAAR9 is a member of a large family of rhodopsin G protein-coupled receptors (GPCRs, or GPRs). GPCRs contain 7 transmembrane domains and transduce extracellular signals through heterotrimeric G proteins.[supplied by OMIM, Jul 2005],



Western blot analysis of lysates from KB cells, primary antibody was diluted at 1:1000, 4° over night