

## TAAR6 rabbit pAb

**Cat#: orb774518 (Manual)**

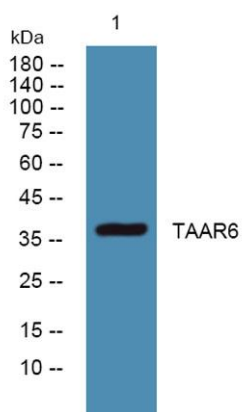
For research use only. Not intended for diagnostic use.

<b>Product Name</b>	TAAR6 rabbit pAb
<b>Host species</b>	Rabbit
<b>Applications</b>	WB;ELISA
<b>Species Cross-Reactivity</b>	Human;Rat;Mouse
<b>Recommended dilutions</b>	WB 1:500-2000 ELISA 1:5000-20000
<b>Immunogen</b>	Synthesized peptide derived from human protein . at AA range: 190-270
<b>Specificity</b>	TAAR6 Polyclonal Antibody detects endogenous levels of protein.
<b>Formulation</b>	Liquid in PBS containing 50% glycerol, and 0.02% sodium azide..
<b>Storage</b>	Store at -20°C. Avoid repeated freeze-thaw cycles.
<b>Protein Name</b>	Trace amine-associated receptor 6 (TaR-6) (Trace amine receptor 6) (Trace amine receptor 4) (TaR-4)
<b>Gene Name</b>	TAAR6 TA4 TAR4 TRAR4
<b>Cellular localization</b>	Cell membrane; Multi-pass membrane protein.
<b>Purification</b>	The antibody was affinity-purified from rabbit antiserum by affinity-chromatography using epitope-specific immunogen.
<b>Clonality</b>	Polyclonal

<b>Concentration</b>	1 mg/ml
<b>Observed band</b>	37kD
<b>Human Gene ID</b>	319100
<b>Human Swiss-Prot Number</b>	Q96RI8
<b>Alternative Names</b>	

### Background

This gene encodes a seven-transmembrane G-protein-coupled receptor that likely functions as a receptor for endogenous trace amines. Mutations in this gene may be associated with schizophrenia.[provided by RefSeq, Feb 2010],



Western blot analysis of lysates from SH-SY5Y cells, primary antibody was diluted at 1:1000, 4°C over night