

TAAR1 rabbit pAb

Cat#: orb774516 (Manual)

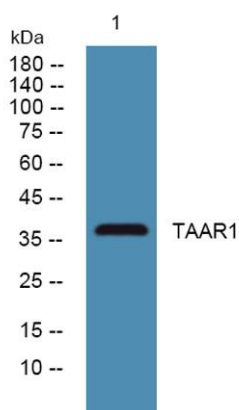
For research use only. Not intended for diagnostic use.

Product Name	TAAR1 rabbit pAb
Host species	Rabbit
Applications	WB;ELISA
Species Cross-Reactivity	Human;Mouse;Rat
Recommended dilutions	WB 1:500-2000 ELISA 1:5000-20000
Immunogen	Synthesized peptide derived from human protein . at AA range: 110-190
Specificity	TAAR1 Polyclonal Antibody detects endogenous levels of protein.
Formulation	Liquid in PBS containing 50% glycerol, and 0.02% sodium azide..
Storage	Store at -20°C. Avoid repeated freeze-thaw cycles.
Protein Name	Trace amine-associated receptor 1 (TaR-1) (Trace amine receptor 1)
Gene Name	TAAR1 TA1 TAR1 TRAR1
Cellular localization	Cell membrane; Multi-pass membrane protein.
Purification	The antibody was affinity-purified from rabbit antiserum by affinity-chromatography using epitope-specific immunogen.
Clonality	Polyclonal

Concentration	1 mg/ml
Observed band	37kD
Human Gene ID	134864
Human Swiss-Prot Number	Q96RJ0
Alternative Names	

Background

The protein encoded by this gene is a G-protein coupled receptor activated by trace amines. The encoded protein responds little or not at all to dopamine, serotonin, epinephrine, or histamine, but responds well to beta-phenylethylamine, p-tyramine, octopamine, and tryptamine. While primarily functioning in neurologic systems, there is evidence that this gene is involved in blood cell and immunologic functions as well. This gene is thought to be intronless. [provided by RefSeq, Nov 2015],



Western blot analysis of lysates from K562 cells, primary antibody was diluted at 1:1000, 4° over night