

P2Y12 rabbit pAb**Cat#: orb774500 (Manual)**

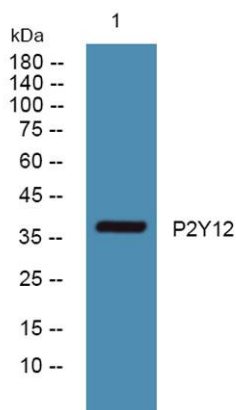
For research use only. Not intended for diagnostic use.

Product Name	P2Y12 rabbit pAb
Host species	Rabbit
Applications	WB;ELISA
Species Cross-Reactivity	Human;Rat;Mouse
Recommended dilutions	WB 1:500-2000 ELISA 1:5000-20000
Immunogen	Synthesized peptide derived from human protein . at AA range: 110-190
Specificity	P2Y12 Polyclonal Antibody detects endogenous levels of protein.
Formulation	Liquid in PBS containing 50% glycerol, and 0.02% sodium azide..
Storage	Store at -20°C. Avoid repeated freeze-thaw cycles.
Protein Name	P2Y purinoceptor 12 (P2Y12) (ADP-glucose receptor) (ADPG-R) (P2T(AC)) (P2Y(AC)) (P2Y(cyc)) (P2Y12 platelet ADP receptor) (P2Y(ADP)) (SP1999)
Gene Name	P2RY12 HORK3
Cellular localization	Cell membrane ; Multi-pass membrane protein .
Purification	The antibody was affinity-purified from rabbit antiserum by affinity-chromatography using epitope-specific immunogen.
Clonality	Polyclonal

Concentration	1 mg/ml
Observed band	37kD
Human Gene ID	64805
Human Swiss-Prot Number	Q9H244
Alternative Names	

Background

The product of this gene belongs to the family of G-protein coupled receptors. This family has several receptor subtypes with different pharmacological selectivity, which overlaps in some cases, for various adenosine and uridine nucleotides. This receptor is involved in platelet aggregation, and is a potential target for the treatment of thromboembolisms and other clotting disorders. Mutations in this gene are implicated in bleeding disorder, platelet type 8 (BDPLT8). Alternative splicing results in multiple transcript variants of this gene. [provided by RefSeq, Jul 2013],



Western blot analysis of lysates from Jarkat cells, primary antibody was diluted at 1:1000, 4° over night