

OR1L1 rabbit pAb**Cat#: orb774422 (Manual)**

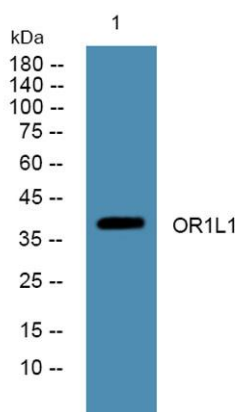
For research use only. Not intended for diagnostic use.

Product Name	OR1L1 rabbit pAb
Host species	Rabbit
Applications	WB;ELISA
Species Cross-Reactivity	Human;Rat;Mouse;
Recommended dilutions	WB 1:500-2000 ELISA 1:5000-20000
Immunogen	Synthesized peptide derived from part region of human protein
Specificity	OR1L1 Polyclonal Antibody detects endogenous levels of protein.
Formulation	Liquid in PBS containing 50% glycerol, and 0.02% sodium azide..
Storage	Store at -20°C. Avoid repeated freeze-thaw cycles.
Protein Name	Olfactory receptor 1L1 (Olfactory receptor 1L2) (Olfactory receptor 9-C) (OR9-C) (Olfactory receptor OR9-27)
Gene Name	OR1L1 OR1L2
Cellular localization	Cell membrane; Multi-pass membrane protein.
Purification	The antibody was affinity-purified from rabbit antiserum by affinity-chromatography using epitope-specific immunogen.
Clonality	Polyclonal

Concentration	1 mg/ml
Observed band	39kD
Human Gene ID	26737
Human Swiss-Prot Number	Q8NH94
Alternative Names	

Background

olfactory receptor family 1 subfamily L member 1(OR1L1) Homo sapiens
Olfactory receptors interact with odorant molecules in the nose, to initiate a neuronal response that triggers the perception of a smell. The olfactory receptor proteins are members of a large family of G-protein-coupled receptors (GPCR) arising from single coding-exon genes. Olfactory receptors share a 7-transmembrane domain structure with many neurotransmitter and hormone receptors and are responsible for the recognition and G protein-mediated transduction of odorant signals. The olfactory receptor gene family is the largest in the genome. The nomenclature assigned to the olfactory receptor genes and proteins for this organism is independent of other organisms. [provided by RefSeq, Jul 2008],



Western blot analysis of lysates from SW480 cells, primary antibody was diluted at 1:1000, 4° over night