

**MCHR1 rabbit pAb****Cat#: orb774382 (Manual)**

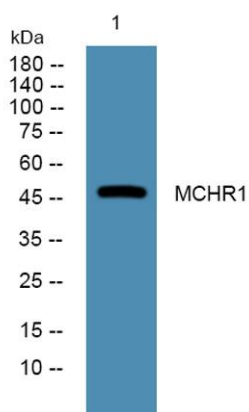
For research use only. Not intended for diagnostic use.

<b>Product Name</b>	MCHR1 rabbit pAb
<b>Host species</b>	Rabbit
<b>Applications</b>	WB;ELISA
<b>Species Cross-Reactivity</b>	Human;Mouse;Rat
<b>Recommended dilutions</b>	WB 1:500-2000 ELISA 1:5000-20000
<b>Immunogen</b>	Synthesized peptide derived from part region of human protein
<b>Specificity</b>	MCHR1 Polyclonal Antibody detects endogenous levels of protein.
<b>Formulation</b>	Liquid in PBS containing 50% glycerol, and 0.02% sodium azide..
<b>Storage</b>	Store at -20°C. Avoid repeated freeze-thaw cycles.
<b>Protein Name</b>	Melanin-concentrating hormone receptor 1 (MCH receptor 1) (MCH-R1) (MCHR-1) (G-protein coupled receptor 24) (MCH-1R) (MCH1R) (MCHR) (SLC-1) (Somatostatin receptor-like protein)
<b>Gene Name</b>	MCHR1 GPR24 SLC1
<b>Cellular localization</b>	Cell membrane; Multi-pass membrane protein.
<b>Purification</b>	The antibody was affinity-purified from rabbit antiserum by affinity-chromatography using epitope-specific immunogen.
<b>Clonality</b>	Polyclonal

<b>Concentration</b>	1 mg/ml
<b>Observed band</b>	46kD
<b>Human Gene ID</b>	2847
<b>Human Swiss-Prot Number</b>	Q99705
<b>Alternative Names</b>	

### Background

melanin concentrating hormone receptor 1(MCHR1) Homo sapiens The protein encoded by this gene, a member of the G protein-coupled receptor family 1, is an integral plasma membrane protein which binds melanin-concentrating hormone. The encoded protein can inhibit cAMP accumulation and stimulate intracellular calcium flux, and is probably involved in the neuronal regulation of food consumption. Although structurally similar to somatostatin receptors, this protein does not seem to bind somatostatin. [provided by RefSeq, Jul 2008],



**Western blot analysis of lysates from K562 cells, primary antibody was diluted at 1:1000, 4° over night**