

GRPR rabbit pAb

Cat#: orb774378 (Manual)

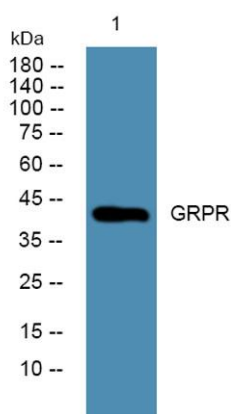
For research use only. Not intended for diagnostic use.

Product Name	GRPR rabbit pAb
Host species	Rabbit
Applications	WB;ELISA
Species Cross-Reactivity	Human;Mouse;Rat
Recommended dilutions	WB 1:500-2000 ELISA 1:5000-20000
Immunogen	Synthesized peptide derived from part region of human protein
Specificity	GRPR Polyclonal Antibody detects endogenous levels of protein.
Formulation	Liquid in PBS containing 50% glycerol, and 0.02% sodium azide..
Storage	Store at -20°C. Avoid repeated freeze-thaw cycles.
Protein Name	Gastrin-releasing peptide receptor (GRP-R) (GRP-preferring bombesin receptor)
Gene Name	GRPR
Cellular localization	Cell membrane ; Multi-pass membrane protein .
Purification	The antibody was affinity-purified from rabbit antiserum by affinity-chromatography using epitope-specific immunogen.
Clonality	Polyclonal

Concentration	1 mg/ml
Observed band	42kD
Human Gene ID	2925
Human Swiss-Prot Number	P30550
Alternative Names	

Background

Gastrin-releasing peptide (GRP) regulates numerous functions of the gastrointestinal and central nervous systems, including release of gastrointestinal hormones, smooth muscle cell contraction, and epithelial cell proliferation and is a potent mitogen for neoplastic tissues. The effects of GRP are mediated through the gastrin-releasing peptide receptor. This receptor is a glycosylated, 7-transmembrane G-protein coupled receptor that activates the phospholipase C signaling pathway. The receptor is aberrantly expressed in numerous cancers such as those of the lung, colon, and prostate. An individual with autism and multiple exostoses was found to have a balanced translocation between chromosome 8 and a chromosome X breakpoint located within the gastrin-releasing peptide receptor gene. [provided by RefSeq, Jul 2008],



Western blot analysis of lysates from Jarkat cells, primary antibody was diluted at 1:1000, 4° over night