

HCAR1 rabbit pAb

Cat#: orb774375 (Manual)

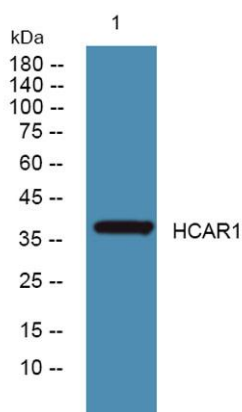
For research use only. Not intended for diagnostic use.

| | |
|---------------------------------|---|
| Product Name | HCAR1 rabbit pAb |
| Host species | Rabbit |
| Applications | WB;ELISA |
| Species Cross-Reactivity | Human;Rat;Mouse; |
| Recommended dilutions | WB 1:500-2000 ELISA 1:5000-20000 |
| Immunogen | Synthesized peptide derived from part region of human protein |
| Specificity | HCAR1 Polyclonal Antibody detects endogenous levels of protein. |
| Formulation | Liquid in PBS containing 50% glycerol, and 0.02% sodium azide.. |
| Storage | Store at -20°C. Avoid repeated freeze-thaw cycles. |
| Protein Name | Hydroxycarboxylic acid receptor 1 (G-protein coupled receptor 104) (G-protein coupled receptor 81) |
| Gene Name | HCAR1 GPR104 GPR81 HCA1 FKSG80 |
| Cellular localization | Cell membrane; Multi-pass membrane protein. |
| Purification | The antibody was affinity-purified from rabbit antiserum by affinity-chromatography using epitope-specific immunogen. |
| Clonality | Polyclonal |

| | |
|--------------------------------|---------|
| Concentration | 1 mg/ml |
| Observed band | 38kD |
| Human Gene ID | 27198 |
| Human Swiss-Prot Number | Q9BXC0 |
| Alternative Names | |

Background

G protein-coupled receptors (GPCRs, or GPRs), such as GPR81, contain 7 transmembrane domains and transduce extracellular signals through heterotrimeric G proteins.[supplied by OMIM, Feb 2005],



Western blot analysis of lysates from K562 cells, primary antibody was diluted at 1:1000, 4° over night