

## GPR84 rabbit pAb

**Cat#: orb774358 (Manual)**

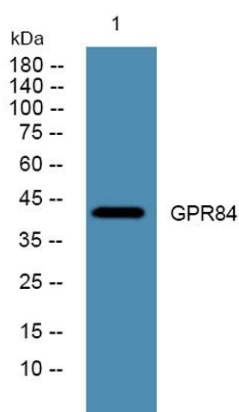
For research use only. Not intended for diagnostic use.

<b>Product Name</b>	GPR84 rabbit pAb
<b>Host species</b>	Rabbit
<b>Applications</b>	WB;ELISA
<b>Species Cross-Reactivity</b>	Human;Rat;Mouse;
<b>Recommended dilutions</b>	WB 1:500-2000 ELISA 1:5000-20000
<b>Immunogen</b>	Synthesized peptide derived from human protein . at AA range: 230-310
<b>Specificity</b>	GPR84 Polyclonal Antibody detects endogenous levels of protein.
<b>Formulation</b>	Liquid in PBS containing 50% glycerol, and 0.02% sodium azide..
<b>Storage</b>	Store at -20°C. Avoid repeated freeze-thaw cycles.
<b>Protein Name</b>	G-protein coupled receptor 84 (Inflammation-related G-protein coupled receptor EX33)
<b>Gene Name</b>	GPR84 EX33
<b>Cellular localization</b>	Cell membrane; Multi-pass membrane protein.
<b>Purification</b>	The antibody was affinity-purified from rabbit antiserum by affinity-chromatography using epitope-specific immunogen.
<b>Clonality</b>	Polyclonal

<b>Concentration</b>	1 mg/ml
<b>Observed band</b>	43kD
<b>Human Gene ID</b>	53831
<b>Human Swiss-Prot Number</b>	Q9NQS5
<b>Alternative Names</b>	

### Background

function:Orphan receptor.,similarity:Belongs to the G-protein coupled receptor 1 family.,tissue specificity:Expressed in brain, heart, muscle, colon, thymus, spleen, kidney, liver, placenta, intestine, bone marrow, lung and peripheral blood leukocytes. Within leukocyte population more abundant expression in neutrophils and eosinophils, in comparison with that in T- or B-lymphocytes.,



**Western blot analysis of lysates from SW480 cells, primary antibody was diluted at 1:1000, 4°over night**