

**NPB rabbit pAb****Cat#: orb774320 (Manual)**

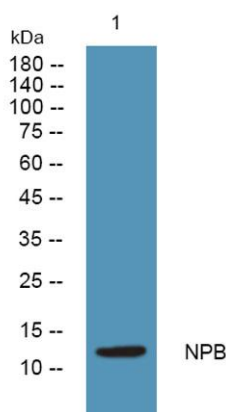
For research use only. Not intended for diagnostic use.

<b>Product Name</b>	NPB rabbit pAb
<b>Host species</b>	Rabbit
<b>Applications</b>	WB;ELISA
<b>Species Cross-Reactivity</b>	Human;Rat;Mouse;
<b>Recommended dilutions</b>	WB 1:500-2000 ELISA 1:5000-20000
<b>Immunogen</b>	Synthesized peptide derived from human protein . at AA range: 1-50
<b>Specificity</b>	NPB Polyclonal Antibody detects endogenous levels of protein.
<b>Formulation</b>	Liquid in PBS containing 50% glycerol, and 0.02% sodium azide..
<b>Storage</b>	Store at -20°C. Avoid repeated freeze-thaw cycles.
<b>Protein Name</b>	Neuropeptide B (Preproprotein L7) (hPPL7) [Cleaved into: Neuropeptide B-23 (NPB23) (hL7); Neuropeptide B-29 (NPB29) (hL7C)]
<b>Gene Name</b>	NPB PPL7 PPNPB
<b>Cellular localization</b>	Secreted.
<b>Purification</b>	The antibody was affinity-purified from rabbit antiserum by affinity-chromatography using epitope-specific immunogen.
<b>Clonality</b>	Polyclonal

<b>Concentration</b>	1 mg/ml
<b>Observed band</b>	13kD
<b>Human Gene ID</b>	256933
<b>Human Swiss-Prot Number</b>	Q8NG41
<b>Alternative Names</b>	

### Background

This gene encodes a member of the neuropeptide B/W family of proteins and preproprotein that is proteolytically processed to generate multiple protein products. The encoded products include neuropeptide B-23 and a C-terminally extended form, neuropeptide B-29, which are characterized by an N-terminal brominated tryptophan amino acid. Both of the encoded peptides bind with higher affinity to neuropeptide B/W (NPB/W) receptor 1 compared to the related NPB/W receptor 2. These peptides may regulate feeding, pain perception, and stress in rodents. [provided by RefSeq, Jul 2015],



**Western blot analysis of lysates from SH-SY5Y cells, primary antibody was diluted at 1:1000, 4°C over night**