

CISD2 rabbit pAb**Cat#: orb774303 (Manual)**

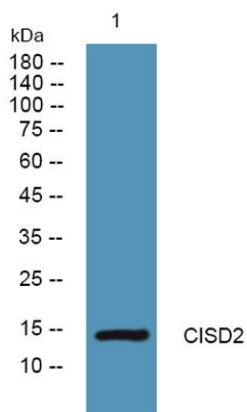
For research use only. Not intended for diagnostic use.

| | |
|---------------------------------|--|
| Product Name | CISD2 rabbit pAb |
| Host species | Rabbit |
| Applications | WB;ELISA |
| Species Cross-Reactivity | Human;Mouse |
| Recommended dilutions | WB 1:500-2000 ELISA 1:5000-20000 |
| Immunogen | Synthesized peptide derived from human protein . at AA range: 31-80 |
| Specificity | CISD2 Polyclonal Antibody detects endogenous levels of protein. |
| Formulation | Liquid in PBS containing 50% glycerol, and 0.02% sodium azide.. |
| Storage | Store at -20°C. Avoid repeated freeze-thaw cycles. |
| Protein Name | CDGSH iron-sulfur domain-containing protein 2 (Endoplasmic reticulum intermembrane small protein) (MitoNEET-related 1 protein) (Miner1) (Nutrient-deprivation autophagy factor-1) (NAF-1) |
| Gene Name | CISD2 CDGSH2 ERIS ZCD2 |
| Cellular localization | Endoplasmic reticulum membrane; Single-pass membrane protein. Mitochondrion outer membrane; Single-pass membrane protein. According to PubMed:20010695, it mainly localizes to the endoplasmic reticulum. However, experiments in mouse showed that it mainly localizes to the mitochondrion outer membrane. |

| | |
|--------------------------------|---|
| Purification | The antibody was affinity-purified from rabbit antiserum by affinity-chromatography using epitope-specific immunogen. |
| Clonality | Polyclonal |
| Concentration | 1 mg/ml |
| Observed band | 14kD |
| Human Gene ID | 493856 |
| Human Swiss-Prot Number | Q8N5K1 |
| Alternative Names | |

Background

The protein encoded by this gene is a zinc finger protein that localizes to the endoplasmic reticulum. The encoded protein binds an iron/sulfur cluster and may be involved in calcium homeostasis. Defects in this gene are a cause of Wolfram syndrome 2. [provided by RefSeq, Mar 2011],



Western blot analysis of lysates from A431 cells, primary antibody was diluted at 1:1000, 4° over night