

ID2 rabbit pAb

Cat#: orb774278 (Manual)

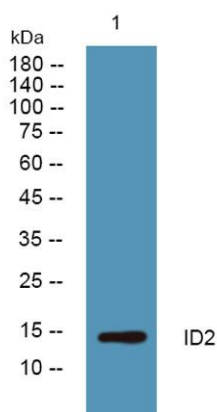
For research use only. Not intended for diagnostic use.

Product Name	ID2 rabbit pAb
Host species	Rabbit
Applications	WB;ELISA
Species Cross-Reactivity	Human;Mouse;Rat
Recommended dilutions	WB 1:500-2000 ELISA 1:5000-20000
Immunogen	Synthesized peptide derived from human protein . at AA range: 21-70
Specificity	ID2 Polyclonal Antibody detects endogenous levels of protein.
Formulation	Liquid in PBS containing 50% glycerol, and 0.02% sodium azide..
Storage	Store at -20°C. Avoid repeated freeze-thaw cycles.
Protein Name	DNA-binding protein inhibitor ID-2 (Class B basic helix-loop-helix protein 26) (bHLHB26) (Inhibitor of DNA binding 2)
Gene Name	ID2 BHLHB26
Cellular localization	Cytoplasm . Nucleus .
Purification	The antibody was affinity-purified from rabbit antiserum by affinity-chromatography using epitope-specific immunogen.
Clonality	Polyclonal

Concentration	1 mg/ml
Observed band	14kD
Human Gene ID	3398
Human Swiss-Prot Number	Q02363
Alternative Names	

Background

The protein encoded by this gene belongs to the inhibitor of DNA binding family, members of which are transcriptional regulators that contain a helix-loop-helix (HLH) domain but not a basic domain. Members of the inhibitor of DNA binding family inhibit the functions of basic helix-loop-helix transcription factors in a dominant-negative manner by suppressing their heterodimerization partners through the HLH domains. This protein may play a role in negatively regulating cell differentiation. A pseudogene of this gene is located on chromosome 3. [provided by RefSeq, Aug 2011],



Western blot analysis of lysates from Jarkat cells, primary antibody was diluted at 1:1000, 4° over night