

ID3 rabbit pAb

Cat#: orb774273 (Manual)

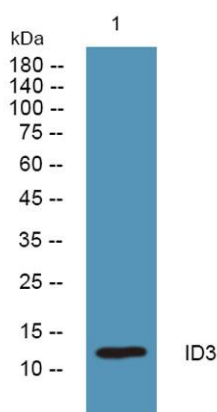
For research use only. Not intended for diagnostic use.

Product Name	ID3 rabbit pAb
Host species	Rabbit
Applications	WB;ELISA
Species Cross-Reactivity	Human;Mouse;Rat
Recommended dilutions	WB 1:500-2000 ELISA 1:5000-20000
Immunogen	Synthesized peptide derived from human protein . at AA range: 68-117
Specificity	ID3 Polyclonal Antibody detects endogenous levels of protein.
Formulation	Liquid in PBS containing 50% glycerol, and 0.02% sodium azide..
Storage	Store at -20°C. Avoid repeated freeze-thaw cycles.
Protein Name	DNA-binding protein inhibitor ID-3 (Class B basic helix-loop-helix protein 25) (bHLHb25) (Helix-loop-helix protein HEIR-1) (ID-like protein inhibitor HLH 1R21) (Inhibitor of DNA binding 3)
Gene Name	ID3 1R21 BHLHB25 HEIR1
Cellular localization	Nucleus.
Purification	The antibody was affinity-purified from rabbit antiserum by affinity-chromatography using epitope-specific immunogen.
Clonality	Polyclonal

Concentration	1 mg/ml
Observed band	13kD
Human Gene ID	3399
Human Swiss-Prot Number	Q02535
Alternative Names	

Background

The protein encoded by this gene is a helix-loop-helix (HLH) protein that can form heterodimers with other HLH proteins. However, the encoded protein lacks a basic DNA-binding domain and therefore inhibits the DNA binding of any HLH protein with which it interacts. [provided by RefSeq, Aug 2011],



Western blot analysis of lysates from HCT116 cells, primary antibody was diluted at 1:1000, 4° over night