

RHCE rabbit pAb

Cat#: orb774252 (Manual)

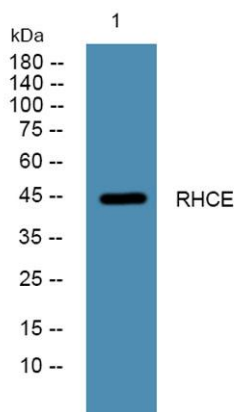
For research use only. Not intended for diagnostic use.

Product Name	RHCE rabbit pAb
Host species	Rabbit
Applications	WB;ELISA
Species Cross-Reactivity	Human;Rat;Mouse;
Recommended dilutions	WB 1:500-2000 ELISA 1:5000-20000
Immunogen	Synthesized peptide derived from human protein . at AA range: 161-210
Specificity	RHCE Polyclonal Antibody detects endogenous levels of protein.
Formulation	Liquid in PBS containing 50% glycerol, and 0.02% sodium azide..
Storage	Store at -20°C. Avoid repeated freeze-thaw cycles.
Protein Name	Blood group Rh(CE) polypeptide (Rh polypeptide 1) (RhPI) (Rh30A) (RhIXB) (Rhesus C/E antigens) (CD antigen CD240CE)
Gene Name	RHCE RHC RHE
Cellular localization	Membrane; Multi-pass membrane protein.
Purification	The antibody was affinity-purified from rabbit antiserum by affinity-chromatography using epitope-specific immunogen.
Clonality	Polyclonal

Concentration	1 mg/ml
Observed band	45kD
Human Gene ID	6006
Human Swiss-Prot Number	P18577
Alternative Names	

Background

The Rh blood group system is the second most clinically significant of the blood groups, second only to ABO. It is also the most polymorphic of the blood groups, with variations due to deletions, gene conversions, and missense mutations. The Rh blood group includes this gene which encodes both the RhC and RhE antigens on a single polypeptide and a second gene which encodes the RhD protein. The classification of Rh-positive and Rh-negative individuals is determined by the presence or absence of the highly immunogenic RhD protein on the surface of erythrocytes. A mutation in this gene results in amorph-type Rh-null disease. Alternative splicing of this gene results in multiple transcript variants encoding several different isoforms. [provided by RefSeq, Aug 2016],



Western blot analysis of lysates from KB cells, primary antibody was diluted at 1:1000, 4° over night