

CHODL rabbit pAb**Cat#: orb774237 (Manual)**

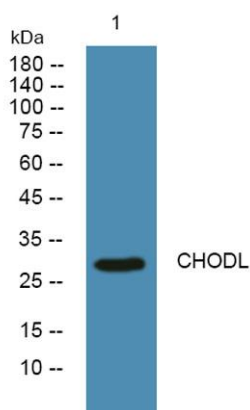
For research use only. Not intended for diagnostic use.

Product Name	CHODL rabbit pAb
Host species	Rabbit
Applications	WB;ELISA
Species Cross-Reactivity	Human;Mouse
Recommended dilutions	WB 1:500-2000 ELISA 1:5000-20000
Immunogen	Synthesized peptide derived from human protein . at AA range: 140-220
Specificity	CHODL Polyclonal Antibody detects endogenous levels of protein.
Formulation	Liquid in PBS containing 50% glycerol, and 0.02% sodium azide..
Storage	Store at -20°C. Avoid repeated freeze-thaw cycles.
Protein Name	Chondrolectin (Transmembrane protein MT75)
Gene Name	CHODL C21orf68 PRED12 UNQ872/PRO1890
Cellular localization	Cytoplasm . Membrane ; Single-pass type I membrane protein .; [Isoform 2]: Endoplasmic reticulum . Endoplasmic reticulum membrane ; Single-pass type I membrane protein .; [Isoform 3]: Cytoplasm .
Purification	The antibody was affinity-purified from rabbit antiserum by affinity-chromatography using epitope-specific immunogen.
Clonality	Polyclonal

Concentration	1 mg/ml
Observed band	30kD
Human Gene ID	140578
Human Swiss-Prot Number	Q9H9P2
Alternative Names	

Background

This gene encodes a type I membrane protein with a carbohydrate recognition domain characteristic of C-type lectins in its extracellular portion. In other proteins, this domain is involved in endocytosis of glycoproteins and exogenous sugar-bearing pathogens. This protein localizes predominantly to the perinuclear region. Several transcript variants encoding a few different isoforms have been found for this gene. [provided by RefSeq, Feb 2011],



Western blot analysis of lysates from KB cells, primary antibody was diluted at 1:1000, 4° over night