

SNAI3 rabbit pAb**Cat#: orb774205 (Manual)**

For research use only. Not intended for diagnostic use.

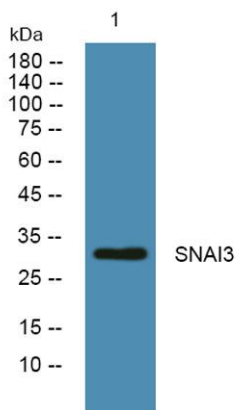
Product Name	SNAI3 rabbit pAb
Host species	Rabbit
Applications	WB;ELISA
Species Cross-Reactivity	Human;Mouse
Recommended dilutions	WB 1:500-2000 ELISA 1:5000-20000
Immunogen	Synthesized peptide derived from human protein . at AA range: 30-110
Specificity	SNAI3 Polyclonal Antibody detects endogenous levels of protein.
Formulation	Liquid in PBS containing 50% glycerol, and 0.02% sodium azide..
Storage	Store at -20°C. Avoid repeated freeze-thaw cycles.
Protein Name	Zinc finger protein SNAI3 (Protein snail homolog 3) (Zinc finger protein 293)
Gene Name	SNAI3 ZNF293
Cellular localization	Nucleus .
Purification	The antibody was affinity-purified from rabbit antiserum by affinity-chromatography using epitope-specific immunogen.
Clonality	Polyclonal

Concentration	1 mg/ml
Observed band	32kD
Human Gene ID	333929
Human Swiss-Prot Number	Q3KNW1

Alternative Names

Background

snail family transcriptional repressor 3(SNAI3) Homo sapiens SNAI3 is a member of the SNAIL gene family, named for the Drosophila snail gene, which plays roles in mesodermal formation during embryogenesis (Katoh and Katoh, 2003 [PubMed 12579345]).[supplied by OMIM, Apr 2009],



Western blot analysis of lysates from U2OS cells, primary antibody was diluted at 1:1000, 4° over night