

EPYC rabbit pAb**Cat#: orb774092 (Manual)**

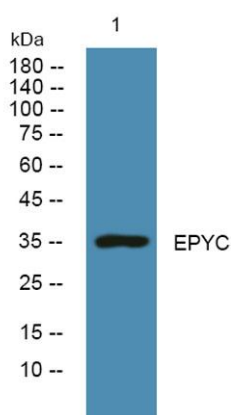
For research use only. Not intended for diagnostic use.

| | |
|---------------------------------|---|
| Product Name | EPYC rabbit pAb |
| Host species | Rabbit |
| Applications | WB;ELISA |
| Species Cross-Reactivity | Human;Mouse |
| Recommended dilutions | WB 1:500-2000 ELISA 1:5000-20000 |
| Immunogen | Synthesized peptide derived from human protein . at AA range: 140-220 |
| Specificity | EPYC Polyclonal Antibody detects endogenous levels of protein. |
| Formulation | Liquid in PBS containing 50% glycerol, and 0.02% sodium azide.. |
| Storage | Store at -20°C. Avoid repeated freeze-thaw cycles. |
| Protein Name | Epiphycan (Dermatan sulfate proteoglycan 3) (Proteoglycan-Lb) (PG-Lb) (Small chondroitin/dermatan sulfate proteoglycan) |
| Gene Name | EPYC DSPG3 PGLB SLRR3B |
| Cellular localization | Secreted, extracellular space, extracellular matrix . |
| Purification | The antibody was affinity-purified from rabbit antiserum by affinity-chromatography using epitope-specific immunogen. |
| Clonality | Polyclonal |

| | |
|--------------------------------|---------|
| Concentration | 1 mg/ml |
| Observed band | 35kD |
| Human Gene ID | 1833 |
| Human Swiss-Prot Number | Q99645 |
| Alternative Names | |

Background

epiphycan(EPYC) Homo sapiens Dermatan sulfate proteoglycan 3 is a member of the small leucine-rich repeat proteoglycan family. This gene is composed of seven exons. It regulates fibrillogenesis by interacting with collagen fibrils and other extracellular matrix proteins. [provided by RefSeq, Jul 2008],



Western blot analysis of lysates from PC12 cells, primary antibody was diluted at 1:1000, 4° over night