

STAB2 rabbit pAb**Cat#: orb774076 (Manual)**

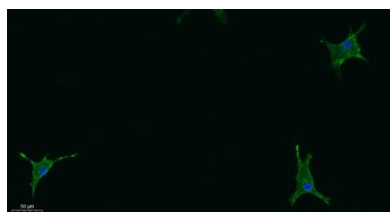
For research use only. Not intended for diagnostic use.

Product Name	STAB2 rabbit pAb
Host species	Rabbit
Applications	IHC;IF
Species Cross-Reactivity	Human;Rat;Mouse
Recommended dilutions	IHC-p 1:50-300 IF 1:100-300 Not yet tested in other applications.
Immunogen	Synthesized peptide derived from human protein . at AA range: 980-1060
Specificity	STAB2 Polyclonal Antibody detects endogenous levels of protein.
Formulation	Liquid in PBS containing 50% glycerol, and 0.02% sodium azide..
Storage	Store at -20°C. Avoid repeated freeze-thaw cycles.
Protein Name	Stabilin-2 (FAS1 EGF-like and X-link domain-containing adhesion molecule 2) (Fasciclin, EGF-like, laminin-type EGF-like and link domain-containing scavenger receptor 2) (FEEL-2) (Hyaluronan receptor f
Gene Name	STAB2 FEEL2 FELL FEX2 HARE
Cellular localization	Cell membrane ; Single-pass type I membrane protein . Cytoplasm . Only a small amount appears to be present at the cell surface (PubMed:17145755).
Purification	The antibody was affinity-purified from rabbit antiserum by affinity-chromatography using epitope-specific immunogen.

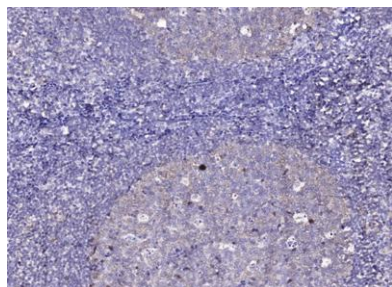
Clonality	Polyclonal
Concentration	1 mg/ml
Observed band	280kD
Human Gene ID	55576
Human Swiss-Prot Number	Q8WWQ8
Alternative Names	

Background

This gene encodes a large, transmembrane receptor protein which may function in angiogenesis, lymphocyte homing, cell adhesion, or receptor scavenging. The protein contains 7 fasciclin, 15 epidermal growth factor (EGF)-like, and 2 laminin-type EGF-like domains as well as a C-type lectin-like hyaluronan-binding Link module. The protein is primarily expressed on sinusoidal endothelial cells of liver, spleen, and lymph node. The receptor has been shown to bind and endocytose ligands such as hyaluronan, low density lipoprotein, Gram-positive and Gram-negative bacteria, and advanced glycosylation end products. Supporting its possible role as a scavenger receptor, the protein has been shown to cycle between the plasma membrane and lysosomes. [provided by RefSeq, Jul 2008],



Immunofluorescence analysis of A549. 1,primary Antibody was diluted at 1:200(4°C overnight). 2, Goat Anti Rabbit IgG (H&L) - Alexa Fluor 488 Secondary antibody was diluted at 1:1000(room temperature, 50min).3, Picture B: DAPI(blue) 10min.



Immunohistochemical analysis of paraffin-embedded human tonsil. 1, Tris-EDTA, pH 9.0 was used for antigen retrieval. 2 Antibody was diluted at 1:200 (4° overnight). 3, Secondary antibody was diluted at 1:200 (room temperature, 45 min).