

DKKL1 rabbit pAb**Cat#: orb774068 (Manual)**

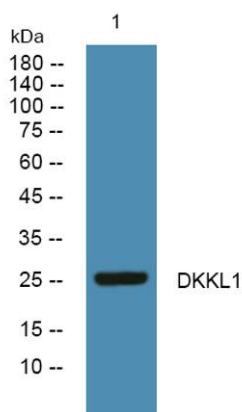
For research use only. Not intended for diagnostic use.

Product Name	DKKL1 rabbit pAb
Host species	Rabbit
Applications	WB;ELISA
Species Cross-Reactivity	Human;Mouse
Recommended dilutions	WB 1:500-2000 ELISA 1:5000-20000
Immunogen	Synthesized peptide derived from human protein . at AA range: 50-130
Specificity	DKKL1 Polyclonal Antibody detects endogenous levels of protein.
Formulation	Liquid in PBS containing 50% glycerol, and 0.02% sodium azide..
Storage	Store at -20°C. Avoid repeated freeze-thaw cycles.
Protein Name	Dickkopf-like protein 1 (Cancer/testis antigen 34) (CT34) (Protein soggy-1) (SGY-1)
Gene Name	DKKL1 SGY1 UNQ735/PRO1429
Cellular localization	Secreted . Cytoplasmic vesicle, secretory vesicle, acrosome . Localized specifically to the crescent shaped acrosome at the apex of the sperm head. .
Purification	The antibody was affinity-purified from rabbit antiserum by affinity-chromatography using epitope-specific immunogen.
Clonality	Polyclonal

Concentration	1 mg/ml
Observed band	26kD
Human Gene ID	27120
Human Swiss-Prot Number	Q9UK85
Alternative Names	

Background

The dickkopf protein family interacts with the Wnt signaling pathway and its members are characterized by two conserved cysteine-rich domains. This gene encodes a secreted protein that has low sequence similarity to the dickkopf-3 protein. Multiple alternatively spliced transcript variants encoding distinct isoforms have been found for this gene. [provided by RefSeq, Oct 2010],



Western blot analysis of lysates from K562 cells, primary antibody was diluted at 1:1000, 4° over night