

## ESAM rabbit pAb

**Cat#: orb774017 (Manual)**

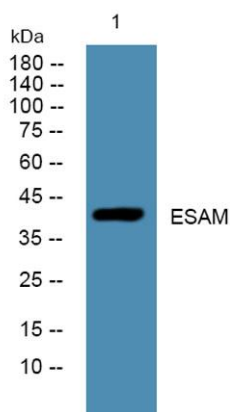
For research use only. Not intended for diagnostic use.

<b>Product Name</b>	ESAM rabbit pAb
<b>Host species</b>	Rabbit
<b>Applications</b>	WB;ELISA
<b>Species Cross-Reactivity</b>	Human;Rat;Mouse
<b>Recommended dilutions</b>	WB 1:500-2000 ELISA 1:5000-20000
<b>Immunogen</b>	Synthesized peptide derived from part region of human protein
<b>Specificity</b>	ESAM Polyclonal Antibody detects endogenous levels of protein.
<b>Formulation</b>	Liquid in PBS containing 50% glycerol, and 0.02% sodium azide..
<b>Storage</b>	Store at -20°C. Avoid repeated freeze-thaw cycles.
<b>Protein Name</b>	Endothelial cell-selective adhesion molecule
<b>Gene Name</b>	ESAM UNQ220/PRO246
<b>Cellular localization</b>	Cell junction, adherens junction . Cell junction, tight junction . Cell membrane ; Single-pass type I membrane protein .
<b>Purification</b>	The antibody was affinity-purified from rabbit antiserum by affinity-chromatography using epitope-specific immunogen.
<b>Clonality</b>	Polyclonal

<b>Concentration</b>	1 mg/ml
<b>Observed band</b>	42kD
<b>Human Gene ID</b>	90952
<b>Human Swiss-Prot Number</b>	Q96AP7
<b>Alternative Names</b>	

### Background

function: Can mediate aggregation most likely through a homophilic molecular interaction.,similarity: Contains 1 Ig-like C2-type (immunoglobulin-like) domain.,similarity: Contains 1 Ig-like V-type (immunoglobulin-like) domain.,subunit: Interacts with BAIAP1.,tissue specificity: Highly expressed in endothelial cells.,



Western blot analysis of lysates from Jarkat cells, primary antibody was diluted at 1:1000, 4° over night