

FCRL1 rabbit pAb**Cat#: orb773968 (Manual)**

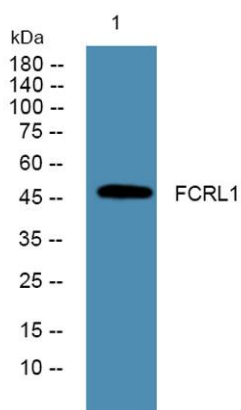
For research use only. Not intended for diagnostic use.

Product Name	FCRL1 rabbit pAb
Host species	Rabbit
Applications	WB;ELISA
Species Cross-Reactivity	Human;Mouse
Recommended dilutions	WB 1:500-2000 ELISA 1:5000-20000
Immunogen	Synthesized peptide derived from part region of human protein
Specificity	FCRL1 Polyclonal Antibody detects endogenous levels of protein.
Formulation	Liquid in PBS containing 50% glycerol, and 0.02% sodium azide..
Storage	Store at -20°C. Avoid repeated freeze-thaw cycles.
Protein Name	Fc receptor-like protein 1 (FcR-like protein 1) (FCRL1) (Fc receptor homolog 1) (FcRH1) (IFGP family protein 1) (hIFGP1) (Immune receptor translocation-associated protein 5) (CD antigen CD307a)
Gene Name	FCRL1 FCRH1 IFGP1 IRTA5
Cellular localization	Cell membrane ; Single-pass type I membrane protein .
Purification	The antibody was affinity-purified from rabbit antiserum by affinity-chromatography using epitope-specific immunogen.
Clonality	Polyclonal

Concentration	1 mg/ml
Observed band	47kD
Human Gene ID	115350
Human Swiss-Prot Number	Q96LA6
Alternative Names	

Background

This gene encodes a member of the immunoglobulin receptor superfamily and is one of several Fc receptor-like glycoproteins clustered on the long arm of chromosome 1. The encoded protein contains three extracellular C2-like immunoglobulin domains, a transmembrane domain and a cytoplasmic domain with two immunoreceptor-tyrosine activation motifs. This protein may play a role in the regulation of cancer cell growth. Alternative splicing results in multiple transcript variants. [provided by RefSeq, Apr 2009],



Western blot analysis of lysates from Jarkat cells, primary antibody was diluted at 1:1000, 4° over night