

MSMB rabbit pAb**Cat#: orb773943 (Manual)**

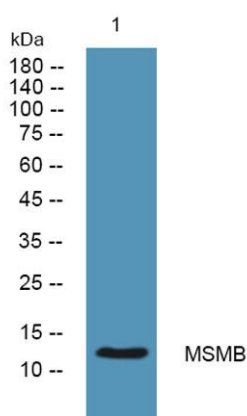
For research use only. Not intended for diagnostic use.

| | |
|---------------------------------|--|
| Product Name | MSMB rabbit pAb |
| Host species | Rabbit |
| Applications | WB;ELISA |
| Species Cross-Reactivity | Human;Rat;Mouse |
| Recommended dilutions | WB 1:500-2000 ELISA 1:5000-20000 |
| Immunogen | Synthesized peptide derived from part region of human protein AA range: 61-110 |
| Specificity | MSMB Polyclonal Antibody detects endogenous levels of protein. |
| Formulation | Liquid in PBS containing 50% glycerol, and 0.02% sodium azide.. |
| Storage | Store at -20°C. Avoid repeated freeze-thaw cycles. |
| Protein Name | Beta-microseminoprotein (Immunoglobulin-binding factor) (IGBF) (PN44) (Prostate secreted seminal plasma protein) (Prostate secretory protein of 94 amino acids) (PSP-94) (PSP94) (Seminal plasma beta-in |
| Gene Name | MSMB PRSP |
| Cellular localization | Secreted. Sperm surface. |
| Purification | The antibody was affinity-purified from rabbit antiserum by affinity-chromatography using epitope-specific immunogen. |
| Clonality | Polyclonal |

| | |
|--------------------------------|---------|
| Concentration | 1 mg/ml |
| Observed band | 12kD |
| Human Gene ID | 4477 |
| Human Swiss-Prot Number | P08118 |
| Alternative Names | |

Background

The protein encoded by this gene is a member of the immunoglobulin binding factor family. It is synthesized by the epithelial cells of the prostate gland and secreted into the seminal plasma. This protein has inhibin-like activity. It may have a role as an autocrine paracrine factor in uterine, breast and other female reproductive tissues. The expression of the encoded protein is found to be decreased in prostate cancer. Two alternatively spliced transcript variants encoding different isoforms are described for this gene. The use of alternate polyadenylation sites has been found for this gene. [provided by RefSeq, Jul 2008],



Western blot analysis of lysates from A431 cells, primary antibody was diluted at 1:1000, 4° over night