

**GNLY rabbit pAb****Cat#: orb773910 (Manual)**

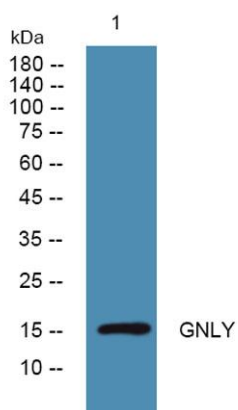
For research use only. Not intended for diagnostic use.

<b>Product Name</b>	GNLY rabbit pAb
<b>Host species</b>	Rabbit
<b>Applications</b>	WB;ELISA
<b>Species Cross-Reactivity</b>	Human;Rat;Mouse;
<b>Recommended dilutions</b>	WB 1:500-2000 ELISA 1:5000-20000
<b>Immunogen</b>	Synthesized peptide derived from part region of human protein
<b>Specificity</b>	GNLY Polyclonal Antibody detects endogenous levels of protein.
<b>Formulation</b>	Liquid in PBS containing 50% glycerol, and 0.02% sodium azide..
<b>Storage</b>	Store at -20°C. Avoid repeated freeze-thaw cycles.
<b>Protein Name</b>	Granulysin (Lymphokine LAG-2) (Protein NKG5) (T-cell activation protein 519)
<b>Gene Name</b>	GNLY LAG2 NKG5 TLA519
<b>Cellular localization</b>	Secreted. Located in the cytotoxic granules of T-cells, which are released upon antigen stimulation.
<b>Purification</b>	The antibody was affinity-purified from rabbit antiserum by affinity-chromatography using epitope-specific immunogen.
<b>Clonality</b>	Polyclonal

<b>Concentration</b>	1 mg/ml
<b>Observed band</b>	15kD
<b>Human Gene ID</b>	10578
<b>Human Swiss-Prot Number</b>	P22749
<b>Alternative Names</b>	

### Background

The product of this gene is a member of the saposin-like protein (SAPLIP) family and is located in the cytotoxic granules of T cells, which are released upon antigen stimulation. This protein is present in cytotoxic granules of cytotoxic T lymphocytes and natural killer cells, and it has antimicrobial activity against *M. tuberculosis* and other organisms. Alternatively spliced transcript variants encoding different isoforms have been identified. [provided by RefSeq, Jul 2008],



**Western blot analysis of lysates from HCT116 cells, primary antibody was diluted at 1:1000, 4°C over night**