

**FKBP8 rabbit pAb****Cat#: orb773873 (Manual)**

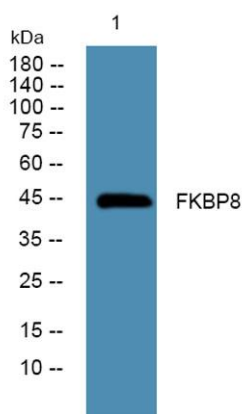
For research use only. Not intended for diagnostic use.

<b>Product Name</b>	FKBP8 rabbit pAb
<b>Host species</b>	Rabbit
<b>Applications</b>	WB;ELISA
<b>Species Cross-Reactivity</b>	Human;Mouse;Rat
<b>Recommended dilutions</b>	WB 1:500-2000 ELISA 1:5000-20000
<b>Immunogen</b>	Synthesized peptide derived from part region of human protein
<b>Specificity</b>	FKBP8 Polyclonal Antibody detects endogenous levels of protein.
<b>Formulation</b>	Liquid in PBS containing 50% glycerol, and 0.02% sodium azide..
<b>Storage</b>	Store at -20°C. Avoid repeated freeze-thaw cycles.
<b>Protein Name</b>	Peptidyl-prolyl cis-trans isomerase FKBP8 (PPIase FKBP8) (EC 5.2.1.8) (38 kDa FK506-binding protein) (38 kDa FKBP) (FKBP-38) (hFKBP38) (FK506-binding protein 8) (FKBP-8) (FKBPR38) (Rotamase)
<b>Gene Name</b>	FKBP8 FKBP38
<b>Cellular localization</b>	Mitochondrion . Mitochondrion membrane ; Single-pass membrane protein; Cytoplasmic side .; [Isoform 1]: Mitochondrion membrane ; Single-pass membrane protein; Cytoplasmic side .; [Isoform 3]: Mitochondrion membrane ; Single-pass membrane protein; Cytoplasmic side .

<b>Purification</b>	The antibody was affinity-purified from rabbit antiserum by affinity-chromatography using epitope-specific immunogen.
<b>Clonality</b>	Polyclonal
<b>Concentration</b>	1 mg/ml
<b>Observed band</b>	45kD
<b>Human Gene ID</b>	23770
<b>Human Swiss-Prot Number</b>	Q14318
<b>Alternative Names</b>	

**Background**

The protein encoded by this gene is a member of the immunophilin protein family, which play a role in immunoregulation and basic cellular processes involving protein folding and trafficking. Unlike the other members of the family, this encoded protein does not seem to have PPlase/rotamase activity. It may have a role in neurons associated with memory function. [provided by RefSeq, Jul 2008],



Western blot analysis of lysates from KB cells, primary antibody was diluted at 1:1000, 4° over night