

FCN2 rabbit pAb**Cat#: orb773845 (Manual)**

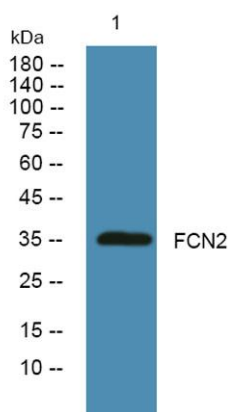
For research use only. Not intended for diagnostic use.

Product Name	FCN2 rabbit pAb
Host species	Rabbit
Applications	WB;ELISA
Species Cross-Reactivity	Human;Rat;Mouse
Recommended dilutions	WB 1:500-2000 ELISA 1:5000-20000
Immunogen	Synthesized peptide derived from part region of human protein AA range: 41-90
Specificity	FCN2 Polyclonal Antibody detects endogenous levels of protein.
Formulation	Liquid in PBS containing 50% glycerol, and 0.02% sodium azide..
Storage	Store at -20°C. Avoid repeated freeze-thaw cycles.
Protein Name	Ficolin-2 (37 kDa elastin-binding protein) (Collagen/fibrinogen domain-containing protein 2) (EBP-37) (Ficolin-B) (Ficolin-beta) (Hucolin) (L-ficolin) (Serum lectin p35)
Gene Name	FCN2 FCNL
Cellular localization	Secreted.
Purification	The antibody was affinity-purified from rabbit antiserum by affinity-chromatography using epitope-specific immunogen.
Clonality	Polyclonal

Concentration	1 mg/ml
Observed band	34kD
Human Gene ID	2220
Human Swiss-Prot Number	Q15485
Alternative Names	

Background

ficolin 2(FCN2) Homo sapiens The product of this gene belongs to the ficolin family of proteins. This family is characterized by the presence of a leader peptide, a short N-terminal segment, followed by a collagen-like region, and a C-terminal fibrinogen-like domain. This gene is predominantly expressed in the liver, and has been shown to have carbohydrate binding and opsonic activities. Alternatively spliced transcript variants encoding different isoforms have been identified. [provided by RefSeq, Jul 2008],



Western blot analysis of lysates from A431 cells, primary antibody was diluted at 1:1000, 4° over night