

FAM3C rabbit pAb**Cat#: orb773826 (Manual)**

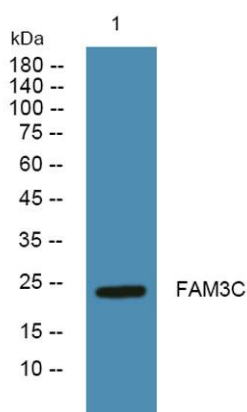
For research use only. Not intended for diagnostic use.

Product Name	FAM3C rabbit pAb
Host species	Rabbit
Applications	WB;ELISA
Species Cross-Reactivity	Human;Mouse;Rat
Recommended dilutions	WB 1:500-2000 ELISA 1:5000-20000
Immunogen	Synthesized peptide derived from part region of human protein
Specificity	FAM3C Polyclonal Antibody detects endogenous levels of protein.
Formulation	Liquid in PBS containing 50% glycerol, and 0.02% sodium azide..
Storage	Store at -20°C. Avoid repeated freeze-thaw cycles.
Protein Name	Protein FAM3C (Interleukin-like EMT inducer)
Gene Name	FAM3C ILEI GS3786
Cellular localization	Secreted . Cytoplasmic vesicle . Cytoplasmic in some cancer cells.
Purification	The antibody was affinity-purified from rabbit antiserum by affinity-chromatography using epitope-specific immunogen.
Clonality	Polyclonal

Concentration	1 mg/ml
Observed band	24kD
Human Gene ID	10447
Human Swiss-Prot Number	Q92520
Alternative Names	

Background

This gene is a member of the family with sequence similarity 3 (FAM3) family and encodes a secreted protein with a GG domain. A change in expression of this protein has been noted in pancreatic cancer-derived cells. [provided by RefSeq, Mar 2010],



Western blot analysis of lysates from SH-SY5Y cells, primary antibody was diluted at 1:1000, 4°C over night