

SKAP1 rabbit pAb**Cat#: orb773822 (Manual)**

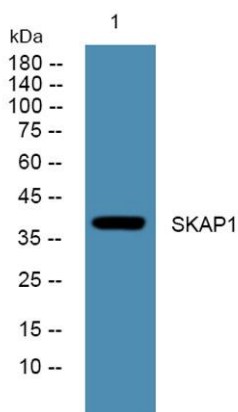
For research use only. Not intended for diagnostic use.

Product Name	SKAP1 rabbit pAb
Host species	Rabbit
Applications	WB;ELISA
Species Cross-Reactivity	Human;Rat;Mouse
Recommended dilutions	WB 1:500-2000 ELISA 1:5000-20000
Immunogen	Synthesized peptide derived from part region of human protein
Specificity	SKAP1 Polyclonal Antibody detects endogenous levels of protein.
Formulation	Liquid in PBS containing 50% glycerol, and 0.02% sodium azide..
Storage	Store at -20°C. Avoid repeated freeze-thaw cycles.
Protein Name	Src kinase-associated phosphoprotein 1 (Src family-associated phosphoprotein 1) (Src kinase-associated phosphoprotein of 55 kDa) (SKAP-55) (pp55)
Gene Name	SKAP1 SCAP1 SKAP55
Cellular localization	Cytoplasm . Nucleus . Cell membrane . Upon T-cell stimulation, translocates to lipid rafts at the cell membrane. .
Purification	The antibody was affinity-purified from rabbit antiserum by affinity-chromatography using epitope-specific immunogen.

Clonality	Polyclonal
Concentration	1 mg/ml
Observed band	39kD
Human Gene ID	8631
Human Swiss-Prot Number	Q86WV1
Alternative Names	

Background

This gene encodes a T cell adaptor protein, a class of intracellular molecules with modular domains capable of recruiting additional proteins but that exhibit no intrinsic enzymatic activity. The encoded protein contains a unique N-terminal region followed by a PH domain and C-terminal SH3 domain. Along with the adhesion and degranulation-promoting adaptor protein, the encoded protein plays a critical role in inside-out signaling by coupling T-cell antigen receptor stimulation to the activation of integrins. [provided by RefSeq, Jul 2008],



Western blot analysis of lysates from KB cells, primary antibody was diluted at 1:1000, 4° over night