

HES4 rabbit pAb

Cat#: orb773808 (Manual)

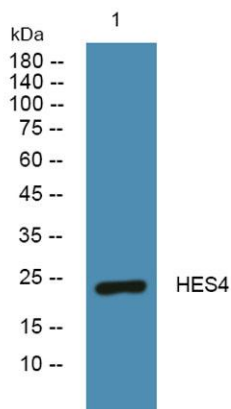
For research use only. Not intended for diagnostic use.

Product Name	HES4 rabbit pAb
Host species	Rabbit
Applications	WB;ELISA
Species Cross-Reactivity	Human;Rat;Mouse;
Recommended dilutions	WB 1:500-2000 ELISA 1:5000-20000
Immunogen	Synthesized peptide derived from part region of human protein
Specificity	HES4 Polyclonal Antibody detects endogenous levels of protein.
Formulation	Liquid in PBS containing 50% glycerol, and 0.02% sodium azide..
Storage	Store at -20°C. Avoid repeated freeze-thaw cycles.
Protein Name	Transcription factor HES-4 (hHES4) (Class B basic helix-loop-helix protein 42) (bHLHb42) (Hairy and enhancer of split 4) (bHLH factor Hes4)
Gene Name	HES4 BHLHB42
Cellular localization	Nucleus .
Purification	The antibody was affinity-purified from rabbit antiserum by affinity-chromatography using epitope-specific immunogen.
Clonality	Polyclonal

Concentration	1 mg/ml
Observed band	24kD
Human Gene ID	57801
Human Swiss-Prot Number	Q9HCC6
Alternative Names	

Background

domain:Has a particular type of basic domain (presence of a helix-interrupting proline) that binds to the N-box (CACNAG), rather than the canonical E-box (CANNTG).,domain:The C-terminal WRPW motif is a transcriptional repression domain necessary for the interaction with Groucho/TLE family members, transcriptional corepressors recruited to specific target DNA by Hairy-related proteins.,function:Transcriptional repressor. Binds DNA on N-box motifs: 5'-CACNAG-3',similarity:Contains 1 basic helix-loop-helix (bHLH) domain.,similarity:Contains 1 Orange domain.,subunit:Transcription repression requires formation of a complex with a corepressor protein of the Groucho/TLE family.,



Western blot analysis of lysates from K562 cells, primary antibody was diluted at 1:1000, 4° over night