

FCN1 rabbit pAb**Cat#: orb773782 (Manual)**

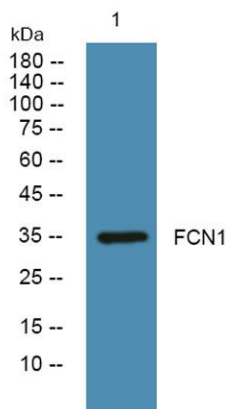
For research use only. Not intended for diagnostic use.

Product Name	FCN1 rabbit pAb
Host species	Rabbit
Applications	WB;ELISA
Species Cross-Reactivity	Human;Rat;Mouse
Recommended dilutions	WB 1:500-2000 ELISA 1:5000-20000
Immunogen	Synthesized peptide derived from part region of human protein
Specificity	FCN1 Polyclonal Antibody detects endogenous levels of protein.
Formulation	Liquid in PBS containing 50% glycerol, and 0.02% sodium azide..
Storage	Store at -20°C. Avoid repeated freeze-thaw cycles.
Protein Name	Ficolin-1 (Collagen/fibrinogen domain-containing protein 1) (Ficolin-A) (Ficolin-alpha) (M-ficolin)
Gene Name	FCN1 FCNM
Cellular localization	Secreted . Cell membrane ; Peripheral membrane protein ; Extracellular side . Found on the monocyte and granulocyte surface (PubMed:20400674).
Purification	The antibody was affinity-purified from rabbit antiserum by affinity-chromatography using epitope-specific immunogen.
Clonality	Polyclonal

Concentration	1 mg/ml
Observed band	35kD
Human Gene ID	2219
Human Swiss-Prot Number	O00602
Alternative Names	

Background

ficolin 1(FCN1) Homo sapiens The ficolin family of proteins are characterized by the presence of a leader peptide, a short N-terminal segment, followed by a collagen-like region, and a C-terminal fibrinogen-like domain. The collagen-like and the fibrinogen-like domains are also found separately in other proteins such as complement protein C1q, C-type lectins known as collectins, and tenascins. However, all these proteins recognize different targets, and are functionally distinct. Ficolin 1 encoded by FCN1 is predominantly expressed in the peripheral blood leukocytes, and has been postulated to function as a plasma protein with elastin-binding activity. [provided by RefSeq, Jul 2008],



Western blot analysis of lysates from A431 cells, primary antibody was diluted at 1:1000, 4°over night