

**TMED1 rabbit pAb****Cat#: orb773753 (Manual)**

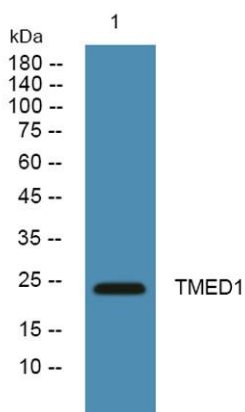
For research use only. Not intended for diagnostic use.

<b>Product Name</b>	TMED1 rabbit pAb
<b>Host species</b>	Rabbit
<b>Applications</b>	WB;ELISA
<b>Species Cross-Reactivity</b>	Human;Rat;Mouse
<b>Recommended dilutions</b>	WB 1:500-2000 ELISA 1:5000-20000
<b>Immunogen</b>	Synthesized peptide derived from part region of human protein
<b>Specificity</b>	TMED1 Polyclonal Antibody detects endogenous levels of protein.
<b>Formulation</b>	Liquid in PBS containing 50% glycerol, and 0.02% sodium azide..
<b>Storage</b>	Store at -20°C. Avoid repeated freeze-thaw cycles.
<b>Protein Name</b>	Transmembrane emp24 domain-containing protein 1 (Interleukin-1 receptor-like 1 ligand) (Putative T1/ST2 receptor-binding protein) (p24 family protein gamma-1) (Tp24) (p24gamma1)
<b>Gene Name</b>	TMED1 IL1RL1L IL1RL1LG
<b>Cellular localization</b>	Cell membrane ; Single-pass type I membrane protein . Endoplasmic reticulum membrane ; Single-pass type I membrane protein . Golgi apparatus, cis-Golgi network membrane ; Single-pass type I membrane protein . Endoplasmic reticulum-Golgi intermediate compartment membrane ; Single-pass type I membrane protein .

<b>Purification</b>	The antibody was affinity-purified from rabbit antiserum by affinity-chromatography using epitope-specific immunogen.
<b>Clonality</b>	Polyclonal
<b>Concentration</b>	1 mg/ml
<b>Observed band</b>	24kD
<b>Human Gene ID</b>	11018
<b>Human Swiss-Prot Number</b>	Q13445
<b>Alternative Names</b>	

#### Background

This gene belongs to the TMED (transmembrane emp24 domain-containing) protein family, which is involved in the vesicular trafficking of proteins. The protein encoded by this gene was identified by its interaction with interleukin 1 receptor-like 1 (IL1RL1) and may play a role in innate immunity. This protein lacks any similarity to other interleukin 1 ligands. Alternative splicing results in multiple transcript variants of this gene. [provided by RefSeq, Jul 2013],



**Western blot analysis of lysates from K562 cells, primary antibody was diluted at 1:1000, 4° over night**