

**NSA2 rabbit pAb****Cat#: orb773615 (Manual)**

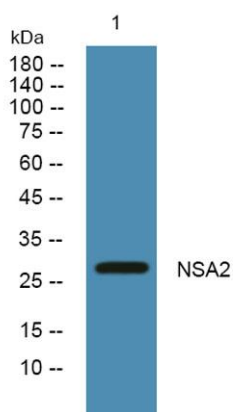
For research use only. Not intended for diagnostic use.

<b>Product Name</b>	NSA2 rabbit pAb
<b>Host species</b>	Rabbit
<b>Applications</b>	WB;ELISA
<b>Species Cross-Reactivity</b>	Human;Mouse;Rat
<b>Recommended dilutions</b>	WB 1:500-2000 ELISA 1:5000-20000
<b>Immunogen</b>	Synthesized peptide derived from part region of human protein
<b>Specificity</b>	NSA2 Polyclonal Antibody detects endogenous levels of protein.
<b>Formulation</b>	Liquid in PBS containing 50% glycerol, and 0.02% sodium azide..
<b>Storage</b>	Store at -20°C. Avoid repeated freeze-thaw cycles.
<b>Protein Name</b>	Ribosome biogenesis protein NSA2 homolog (Hairy cell leukemia protein 1) (TGF-beta-inducible nuclear protein 1)
<b>Gene Name</b>	NSA2 TINP1 HUSSY-29
<b>Cellular localization</b>	Nucleus, nucleolus .
<b>Purification</b>	The antibody was affinity-purified from rabbit antiserum by affinity-chromatography using epitope-specific immunogen.
<b>Clonality</b>	Polyclonal

<b>Concentration</b>	1 mg/ml
<b>Observed band</b>	28kD
<b>Human Gene ID</b>	10412
<b>Human Swiss-Prot Number</b>	O95478
<b>Alternative Names</b>	

### Background

NSA2, ribosome biogenesis homolog(NSA2) Homo sapiens This gene encodes a nucleolar protein involved in cell cycle regulation and proliferation. This gene was identified based on sequence similarity to a highly conserved *Saccharomyces cerevisiae* gene encoding a pre-ribosomal protein, which is involved in large ribosomal subunit biogenesis. The encoded protein is found at elevated levels in diabetic nephropathy. Alternative splicing results in multiple transcript variants. Several related pseudogenes have been identified. [provided by RefSeq, Nov 2012],



**Western blot analysis of lysates from DU145 cells, primary antibody was diluted at 1:1000, 4° over night**