

KT33A rabbit pAb**Cat#: orb773598 (Manual)**

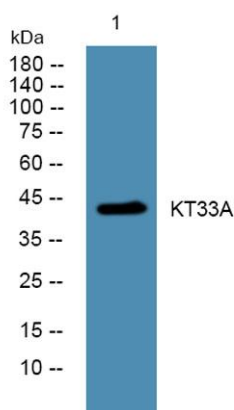
For research use only. Not intended for diagnostic use.

Product Name	KT33A rabbit pAb
Host species	Rabbit
Applications	WB;ELISA
Species Cross-Reactivity	Human;Rat;Mouse;
Recommended dilutions	WB 1:500-2000 ELISA 1:5000-20000
Immunogen	Synthesized peptide derived from part region of human protein AA range: 276-326
Specificity	KT33A Polyclonal Antibody detects endogenous levels of protein.
Formulation	Liquid in PBS containing 50% glycerol, and 0.02% sodium azide..
Storage	Store at -20°C. Avoid repeated freeze-thaw cycles.
Protein Name	Keratin, type I cuticular Ha3-I (Hair keratin, type I Ha3-I) (Keratin-33A) (K33A)
Gene Name	KRT33A HHA3-I HKA3A KRTHA3A
Cellular localization	extracellular space,intermediate filament,
Purification	The antibody was affinity-purified from rabbit antiserum by affinity-chromatography using epitope-specific immunogen.
Clonality	Polyclonal

Concentration	1 mg/ml
Observed band	44kD
Human Gene ID	3883
Human Swiss-Prot Number	O76009
Alternative Names	

Background

This gene encodes a member of the keratin gene family. This gene is one of multiple type I hair keratin genes that are clustered in a region of chromosome 17q12-q21 and have the same direction of transcription. As a type I hair keratin, the encoded protein is an acidic protein which heterodimerizes with type II keratins to form hair and nails. There are two isoforms of this protein, encoded by two separate genes, keratin 33A and keratin 33B. [provided by RefSeq, May 2012].



Western blot analysis of lysates from KB cells, primary antibody was diluted at 1:1000, 4° over night