

IFNA4 rabbit pAb**Cat#: orb773581 (Manual)**

For research use only. Not intended for diagnostic use.

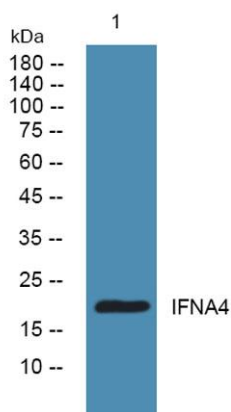
Product Name	IFNA4 rabbit pAb
Host species	Rabbit
Applications	WB;ELISA
Species Cross-Reactivity	Human;Rat;Mouse;
Recommended dilutions	WB 1:500-2000 ELISA 1:5000-20000
Immunogen	Synthesized peptide derived from part region of human protein AA range: 87-137
Specificity	IFNA4 Polyclonal Antibody detects endogenous levels of protein.
Formulation	Liquid in PBS containing 50% glycerol, and 0.02% sodium azide..
Storage	Store at -20°C. Avoid repeated freeze-thaw cycles.
Protein Name	Interferon alpha-4 (IFN-alpha-4) (Interferon alpha-4B) (Interferon alpha-76) (Interferon alpha-M1)
Gene Name	IFNA4
Cellular localization	Secreted.
Purification	The antibody was affinity-purified from rabbit antiserum by affinity-chromatography using epitope-specific immunogen.
Clonality	Polyclonal

Concentration	1 mg/ml
Observed band	20kD
Human Gene ID	3441
Human Swiss-Prot Number	P05014

Alternative Names

Background

function:Produced by macrophages, IFN-alpha have antiviral activities. Interferon stimulates the production of two enzymes: a protein kinase and an oligoadenylate synthetase.,polymorphism:Two forms exist; alpha-4a (shown here) and alpha-4b. They seem to be equally abundant.,similarity:Belongs to the alpha/beta interferon family.,



Western blot analysis of lysates from A431 cells, primary antibody was diluted at 1:1000, 4° over night