

CYB5B rabbit pAb**Cat#: orb773555 (Manual)**

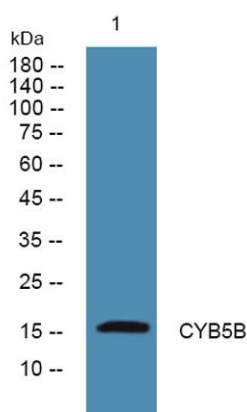
For research use only. Not intended for diagnostic use.

Product Name	CYB5B rabbit pAb
Host species	Rabbit
Applications	WB;ELISA
Species Cross-Reactivity	Human;Rat;Mouse;
Recommended dilutions	WB 1:500-2000 ELISA 1:5000-20000
Immunogen	Synthesized peptide derived from human protein . at AA range: 50-130
Specificity	CYB5B Polyclonal Antibody detects endogenous levels of protein.
Formulation	Liquid in PBS containing 50% glycerol, and 0.02% sodium azide..
Storage	Store at -20°C. Avoid repeated freeze-thaw cycles.
Protein Name	Cytochrome b5 type B (Cytochrome b5 outer mitochondrial membrane isoform)
Gene Name	CYB5B CYB5M OMB5
Cellular localization	Mitochondrion outer membrane .
Purification	The antibody was affinity-purified from rabbit antiserum by affinity-chromatography using epitope-specific immunogen.
Clonality	Polyclonal

Concentration	1 mg/ml
Observed band	16kD
Human Gene ID	80777
Human Swiss-Prot Number	O43169
Alternative Names	

Background

function: Cytochrome b5 is a membrane bound hemoprotein which function as an electron carrier for several membrane bound oxygenases.,similarity: Belongs to the cytochrome b5 family.,similarity: Contains 1 cytochrome b5 heme-binding domain.,subunit: Component of a complex composed of cytochrome b5, NADH-cytochrome b5 reductase (CYB5R3) and MOSC2.,



Western blot analysis of lysates from PC12 cells, primary antibody was diluted at 1:1000, 4° over night