

MIXL1 rabbit pAb**Cat#: orb773524 (Manual)**

For research use only. Not intended for diagnostic use.

Product Name	MIXL1 rabbit pAb
Host species	Rabbit
Applications	WB;ELISA
Species Cross-Reactivity	Human;Mouse
Recommended dilutions	WB 1:500-2000 ELISA 1:5000-20000
Immunogen	Synthesized peptide derived from human protein . at AA range: 90-170
Specificity	MIXL1 Polyclonal Antibody detects endogenous levels of protein.
Formulation	Liquid in PBS containing 50% glycerol, and 0.02% sodium azide..
Storage	Store at -20°C. Avoid repeated freeze-thaw cycles.
Protein Name	Homeobox protein MIXL1 (Homeodomain protein MIX) (hMix) (MIX1 homeobox-like protein 1) (Mix.1 homeobox-like protein)
Gene Name	MIXL1 MIXL
Cellular localization	Nucleus .
Purification	The antibody was affinity-purified from rabbit antiserum by affinity-chromatography using epitope-specific immunogen.
Clonality	Polyclonal

Concentration 1 mg/ml

Observed band 25kD

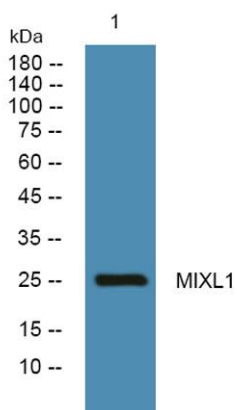
Human Gene ID 83881

Human Swiss-Prot Number Q9H2W2

Alternative Names

Background

Mix paired-like homeobox(MIXL1) Homo sapiens Homeodomain proteins, such as MIXL1, are transcription factors that regulate cell fate during development (Hart et al., 2005 [PubMed 15982639]).[supplied by OMIM, Mar 2008],



Western blot analysis of lysates from PC12 cells, primary antibody was diluted at 1:1000, 4° over night