

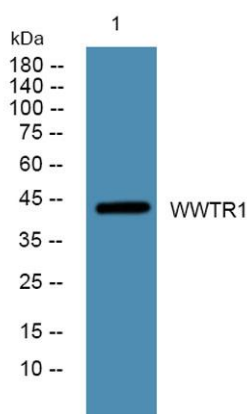
WWTR1 rabbit pAb**Cat#: orb773522 (Manual)**

For research use only. Not intended for diagnostic use.

Product Name	WWTR1 rabbit pAb
Host species	Rabbit
Applications	WB;ELISA
Species Cross-Reactivity	Human;Mouse
Recommended dilutions	WB 1:500-2000 ELISA 1:5000-20000
Immunogen	Synthesized peptide derived from part region of human protein
Specificity	WWTR1 Polyclonal Antibody detects endogenous levels of protein.
Formulation	Liquid in PBS containing 50% glycerol, and 0.02% sodium azide..
Storage	Store at -20°C. Avoid repeated freeze-thaw cycles.
Protein Name	WW domain-containing transcription regulator protein 1 (Transcriptional coactivator with PDZ-binding motif)
Gene Name	WWTR1 TAZ
Cellular localization	Nucleus . Cytoplasm . Cell membrane . Concentrates along specific portions of the plasma membrane, and accumulates in punctate nuclear bodies (By similarity). When phosphorylated, is retained in the cytoplasm by YWHAZ (By similarity). Can be retained in the nucleus by MED15 (PubMed:18568018). Localized in the cytoplasm in areas of epithelial cell high density (PubMed:21145499). At blastocyst stage expressed in the nucleus in trophectodermal cells, however expressed in the cytoplasm in the inner cell mass (By similarity). .

Purification	The antibody was affinity-purified from rabbit antiserum by affinity-chromatography using epitope-specific immunogen.
Clonality	Polyclonal
Concentration	1 mg/ml
Observed band	44kD
Human Gene ID	25937
Human Swiss-Prot Number	Q9GZV5
Alternative Names	

Background	<p>domain: Binds to transcription factors via its WW domain., domain: The PDZ-binding motif is essential for stimulated gene transcription. It localizes the protein into both punctate nuclear foci and plasma membrane-associated complexes., function: Functions as a transcriptional coactivator., PTM: Phosphorylated. Phosphorylation results in the inhibition of transcriptional coactivation through YWHAZ-mediated nuclear export., similarity: Contains 1 WW domain., subcellular location: Concentrates along specific portions of the plasma membrane, and accumulates in punctate nuclear bodies. When phosphorylated, is retained in cytoplasm by YWHAZ., subunit: Binds to SLC9A3R2 via the PDZ motif at the plasma membrane. Binds to YWHAZ in vivo and in vitro through the phosphoserine-binding motif RSHSP., tissue specificity: Highly expressed in kidney, heart, placenta and lung.,</p>
-------------------	--



Western blot analysis of lysates from K562 cells, primary antibody was diluted at 1:1000, 4° over night